



United States
Department of
Agriculture

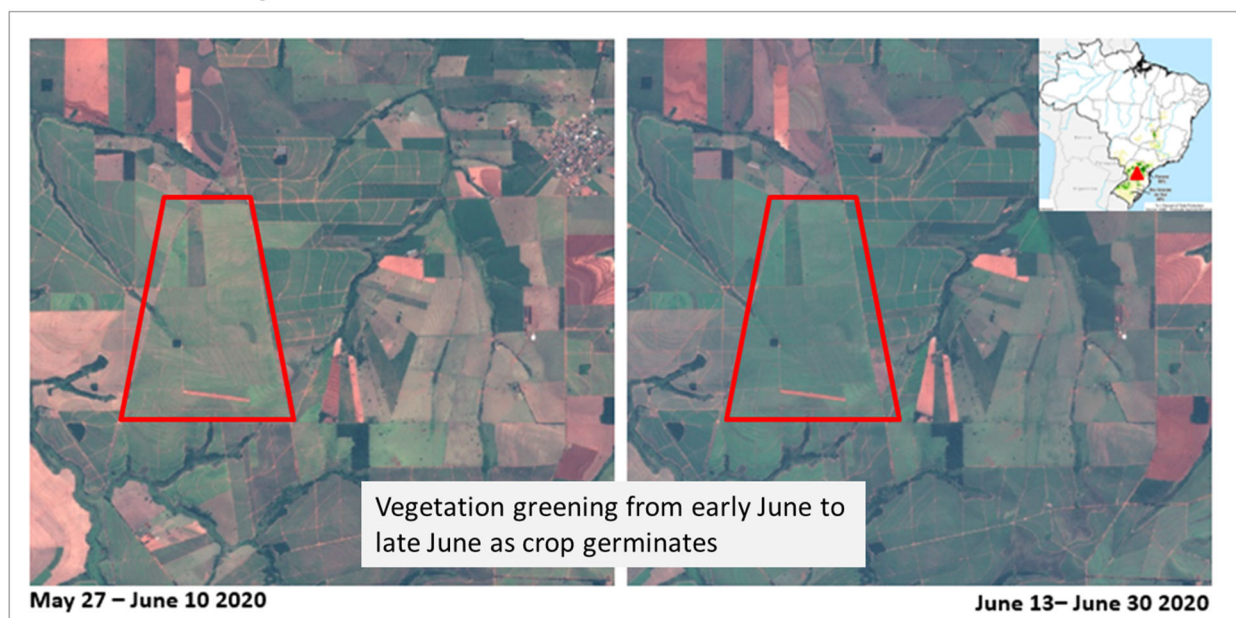
Foreign
Agricultural
Service

Circular Series
WAP 7-20
July 2020

World Agricultural Production

Brazil Wheat: Production Estimate Increases from Last Year

Early-season Wheat Conditions in Paraná



USDA Foreign Agricultural Service
Global Market Analysis
International Production Assessment Division

SOURCE: ESA Copernicus Sentinel-2 Imagery, 10 meter

Brazil's 2020/21 wheat production is estimated at 5.7 million metric tons (mmt), up 0.2 mmt from last month, and up 0.5 mmt from last year. Area is estimated at 2.2 million hectares (mha), up 0.1 mha (4 percent) from last month, and up 0.14 mha (7 percent) from last year. Yield is estimated at 2.62 tons per hectare, the same as last month, up 3 percent from last year, and up 2 percent from the 5-year average.

Planting began in April in Paraná and is almost complete, with progress slightly ahead of last year and the 5-year average, as reported by the state Secretariat of Agriculture and Supply-Department of Rural Economy (DERAL/SEAB). Rio Grande do Sul began planting in May with 87 percent planted as of July 2 as reported by the Technical Assistance and Rural Extension of Rio Grande do Sul (EMATER-RS). A larger planted area for 2020/21 also contributes to the increased production estimate compared to last year.

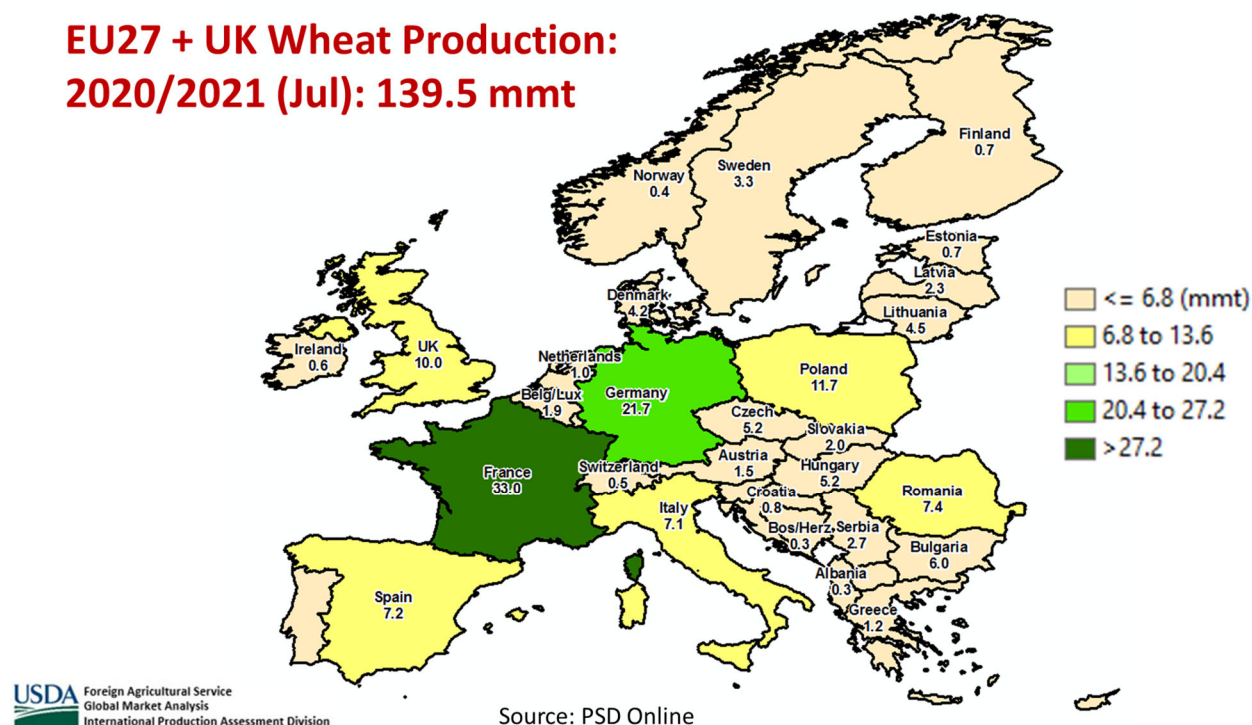
Approved by the World Agricultural Outlook Board

Rainfall in May and June replenished soil moisture deficits from March and early April. This was beneficial during planting season for Paraná and Rio Grande do Sul, the two states with roughly 86 percent of wheat production. Thus far, frost-free conditions have spared the young germinated seedlings. Evidence of early greening up of wheat can be seen in the satellite imagery from late June 2020. (For more information, please contact Sunita.Yadav-Pauletti@usda.gov.)

EU27 + UK* Wheat: Production Falls Further

EU27 + UK (EU) wheat production is estimated at 139.5 million metric tons (mmt), down 1.5 mmt from last month, down 15.4 mmt from last year and 10.2 mmt below the 5-year average. Area is estimated at 25.3 million hectares (mha), unchanged from last month, but 0.9 mha below last year and 4 percent below the 5-year average. Yield is estimated at 5.52 tons per hectare, down 1 percent from last month and 7 percent from last year.

EU27 + UK Wheat Production: 2020/2021 (Jul): 139.5 mmt



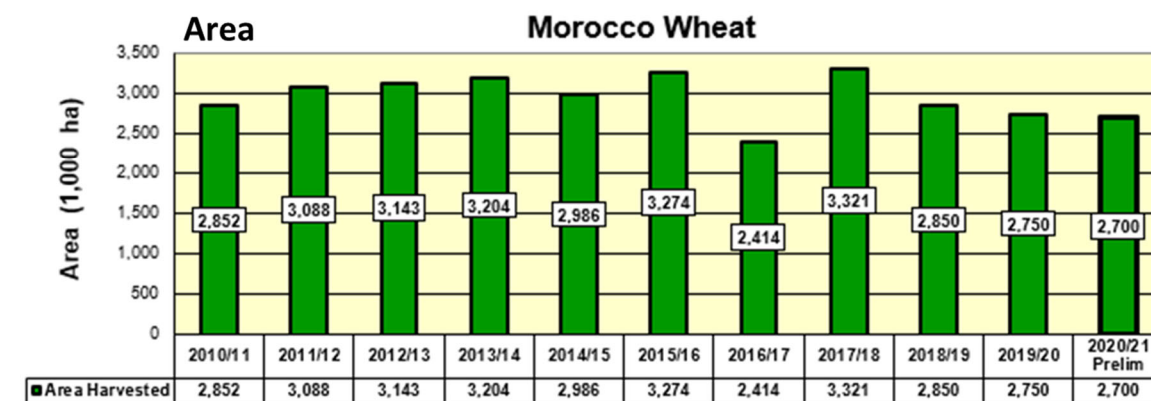
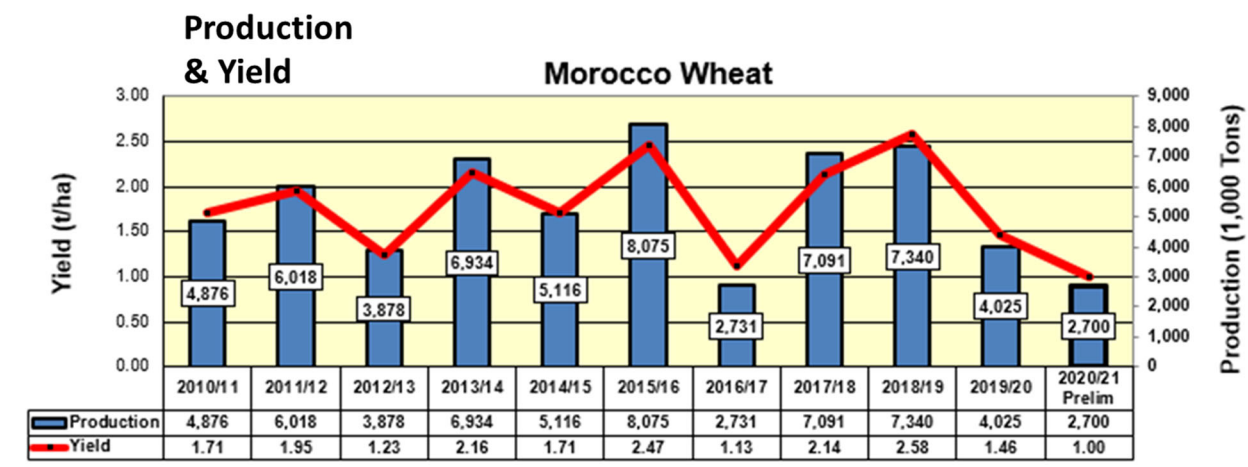
The EU wheat crop has suffered through several difficulties this season, including excessive rainfall last autumn that hampered planting in northwest Europe and a severe spring drought across much of the continent. The largest changes this month are reductions in France and Spain. In France, the EU’s largest wheat producer, yields have struggled as soil moisture deficiencies have plagued the crop during spring and early summer. The amount of the crop deemed “good” or “very good” compared to last year is significantly less, according to official sources. Increased rainfall during June arrived too late to significantly revive wheat yields in France. Spain has seen favorable conditions this season resulting in an estimated bumper crop; however, late season dryness lowered expectations of a record harvest. Harvesting is currently underway in the southern regions of the European Union.

* USDA is temporarily including the United Kingdom (UK) and the European Union as EU27 + UK. Although the UK is officially separated from the EU, the UK estimates remain included within USDA’s EU total. During its early transition out of the block, the UK is treated by other member states similarly to the current member states.

For country-specific area, yield, and production estimates within the European Union (EU), please go to PSD Online at <https://apps.fas.usda.gov/PSDOnline/app/index.html#/app/home>, and select “Downloadable Data Sets.” Select the zipped file for “EU Countries Area & Production.” (For more information, please contact Bryan.Purcell@usda.gov.)

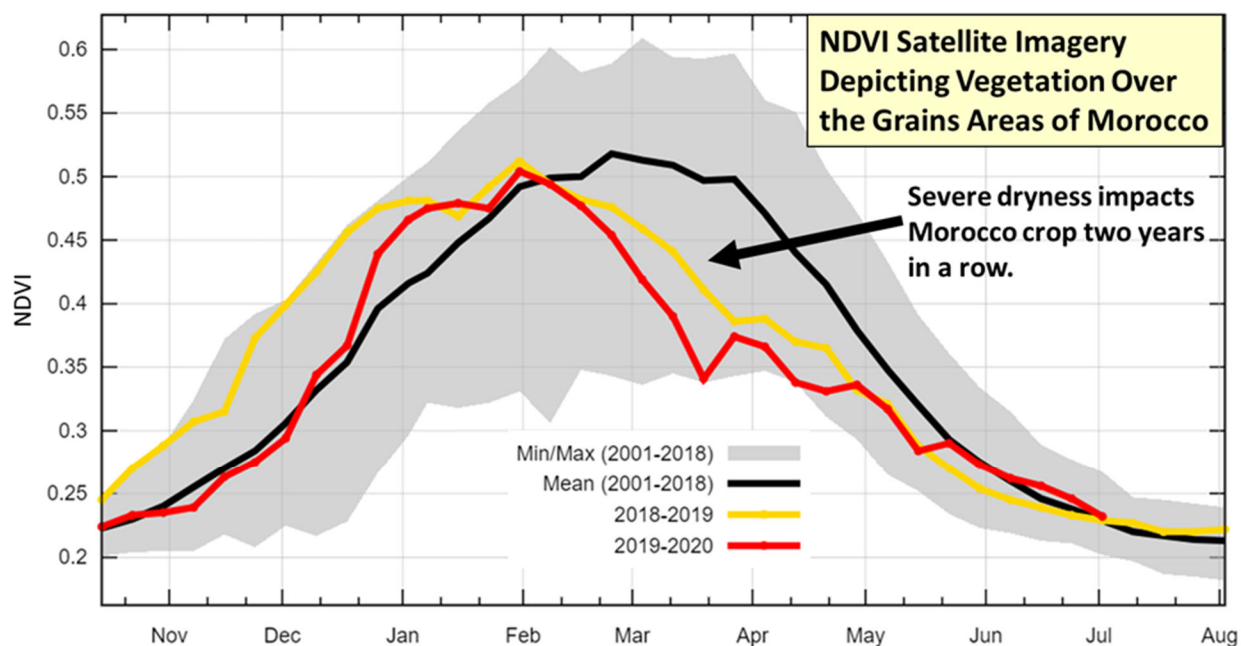
Morocco Wheat: Production Tanks in 2020

Further reductions were necessary to bring Morocco’s estimates in line with expected harvest results and the latest data. Production is estimated at 2.7 million metric tons (mmt), or 23 percent below last month, and 1.3 mmt or 33 percent below last year. The 2020 crop is estimated to be 54 percent below the 5-year average of 5.9 mmt. Yield is estimated at 1.00 ton per hectare (t/ha), down from last month by 0.3 t/ha (23 percent). Also, yield is significantly down (49 percent) from the 5-year average of 1.95 t/ha. Area remains unchanged from last month at 2.7 million hectares (mha), down 0.05 mha from last year and down 8 percent from the 5-year average of 2.9 mha.



Morocco had a very poor 2020/21 cereals crop caused by rain deficits throughout the entire growing season, including establishment, growth, and grain fill. Satellite-derived Normalized Difference Vegetation Index (NDVI) show the decreased vegetation conditions. Recent harvest data indicates production lower than previous estimates. Due to the lowest harvest in years, the Moroccan government has made the unprecedented decision to extend the suspension of customs duties on common wheat through and beyond the summer, a time when the domestic harvest is on the market.

Seasonal Vegetation Health in Wheat Areas of Morocco



USDA Foreign Agricultural Service
Global Market Analysis
International Production Assessment Division

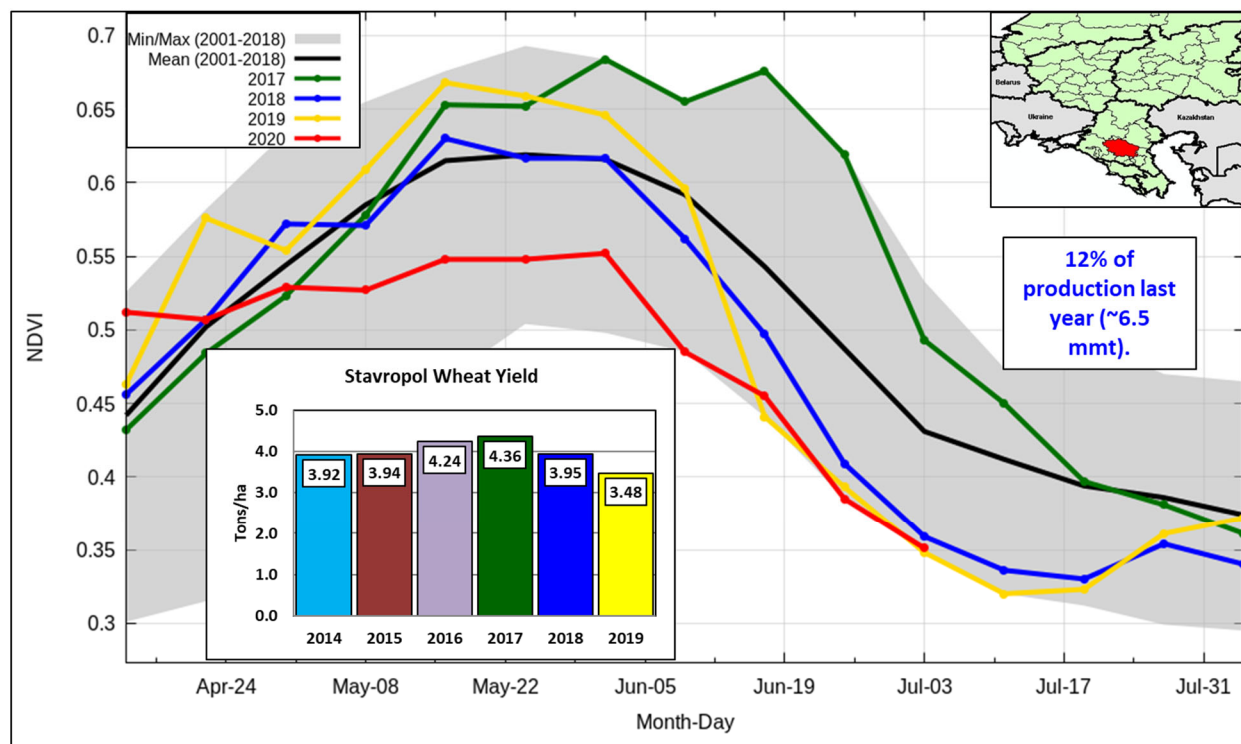
NASA TERRA MODIS 8-day NDVI with GFSAD30 Crop Mask

For more information, please see USDA attaché reports [Morocco Grain and Feed Update MO2020-0013](#) and [Morocco Extends Suspension of Common Wheat Import Duty until December 2020](#). (For more information, please contact Bryan.Purcell@usda.gov.)

Russia Wheat: Winter Wheat Production Down; Spring Wheat Production Up

USDA estimates Russia wheat production for 2020/21 at 76.5 million metric tons (mmt), down 1 percent from last month, but up 4 percent from last year. The forecast includes 56.0 mmt of winter wheat and 20.5 mmt of spring wheat. USDA crop production forecasts for Russia exclude forecast output from Crimea. Total wheat yield is forecast at 2.76 tons per hectare, down 1 percent from last month, but up 3 percent from last year. Total area is forecast at 27.7 million hectares (mha), up 1 percent from last month and last year due to increased planting estimates of the spring wheat crop.

Stavropol: MODIS NDVI



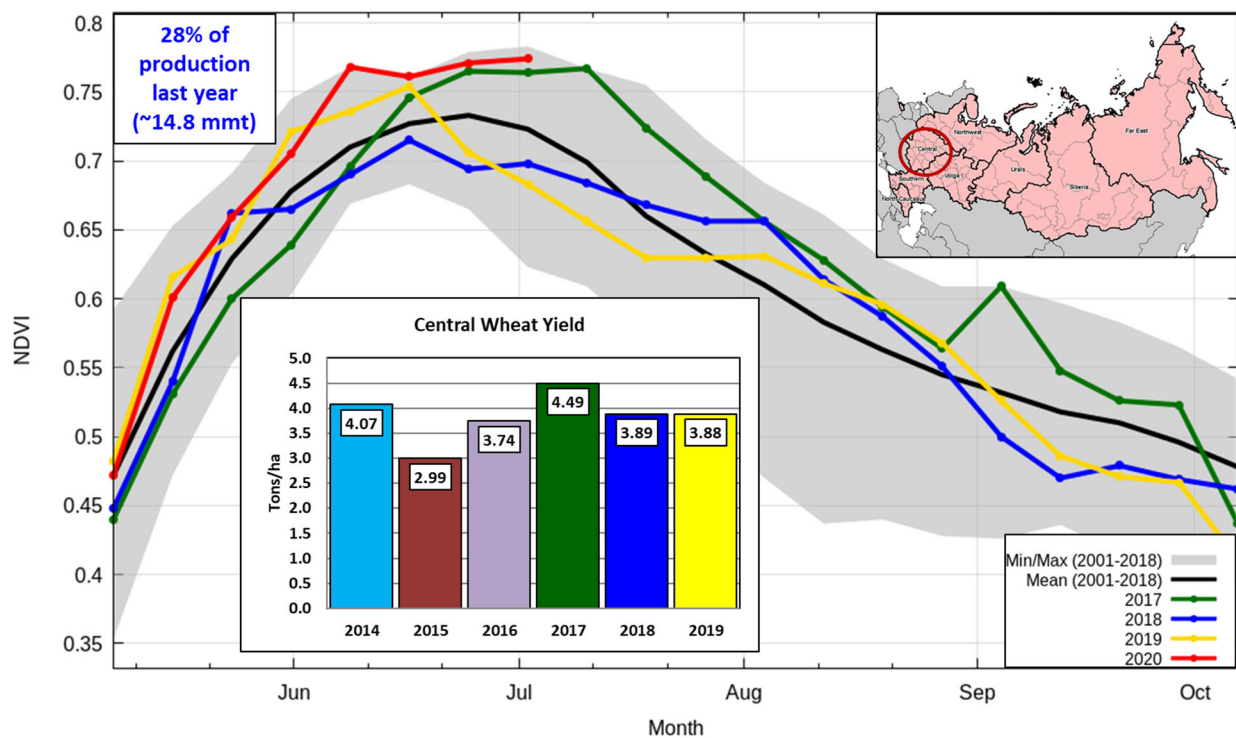
USDA Foreign Agricultural Service
Global Market Analysis
International Production Assessment Division

Source: USDA/NASA Global Agriculture Monitoring Project (GLAM), GFSAD30 2015 Crop Mask

Conditions for the winter wheat crop continue to remain mixed across the main wheat growing Districts. Concerns over dry conditions in Stavropol and parts of the Southern District have persisted throughout June. Timely rainfall in the Central District is very likely to lead to a bumper crop, which is corroborated by a higher-than-average Normalized Difference Vegetation Index (NDVI). The potential bumper crop in the Central District and the near-average crop in the Volga District, however, are not enough to offset lower yields in the Southern District.

Spring wheat planting is complete as of the end of June. As of June 22, planting had occurred on 12.5 mha, exceeding the initial Russian Ministry of Agriculture forecast of 12.1 mha. Favorable rainfall throughout June occurred in most of the spring wheat growing Districts, except for Siberia. Dry conditions have lingered in Siberia during planting. Weather in July and August, however, is more influential to yield potential.

Central District



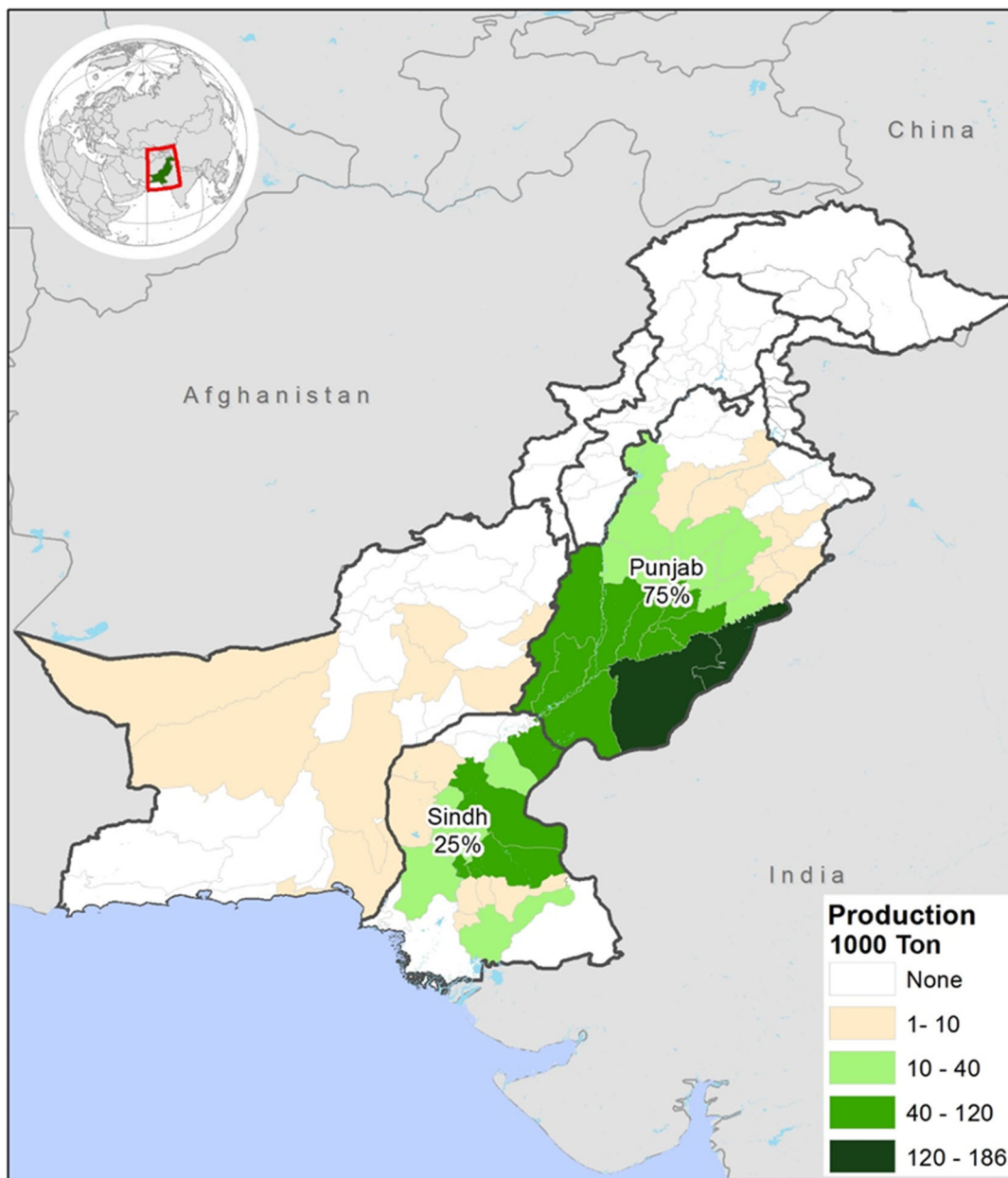
USDA Foreign Agricultural Service
 Global Market Analysis
 International Production Assessment Division

Source: USDA/NASA Global Agriculture Monitoring Project (GLAM),
 GFSAD30 2015 Crop Mask

Area, yield, and production estimates for Russia winter wheat and spring wheat are available on PSD Online. Select “Downloadable Data Sets” and open the zipped file for “Russia Wheat; Winter/Spring Area & Production” (*For more information, please contact Katie.McGaughey@usda.gov.*)

Pakistan Cotton: Production Revised Up on Higher Sown Area

Pakistan Cotton Production Distribution



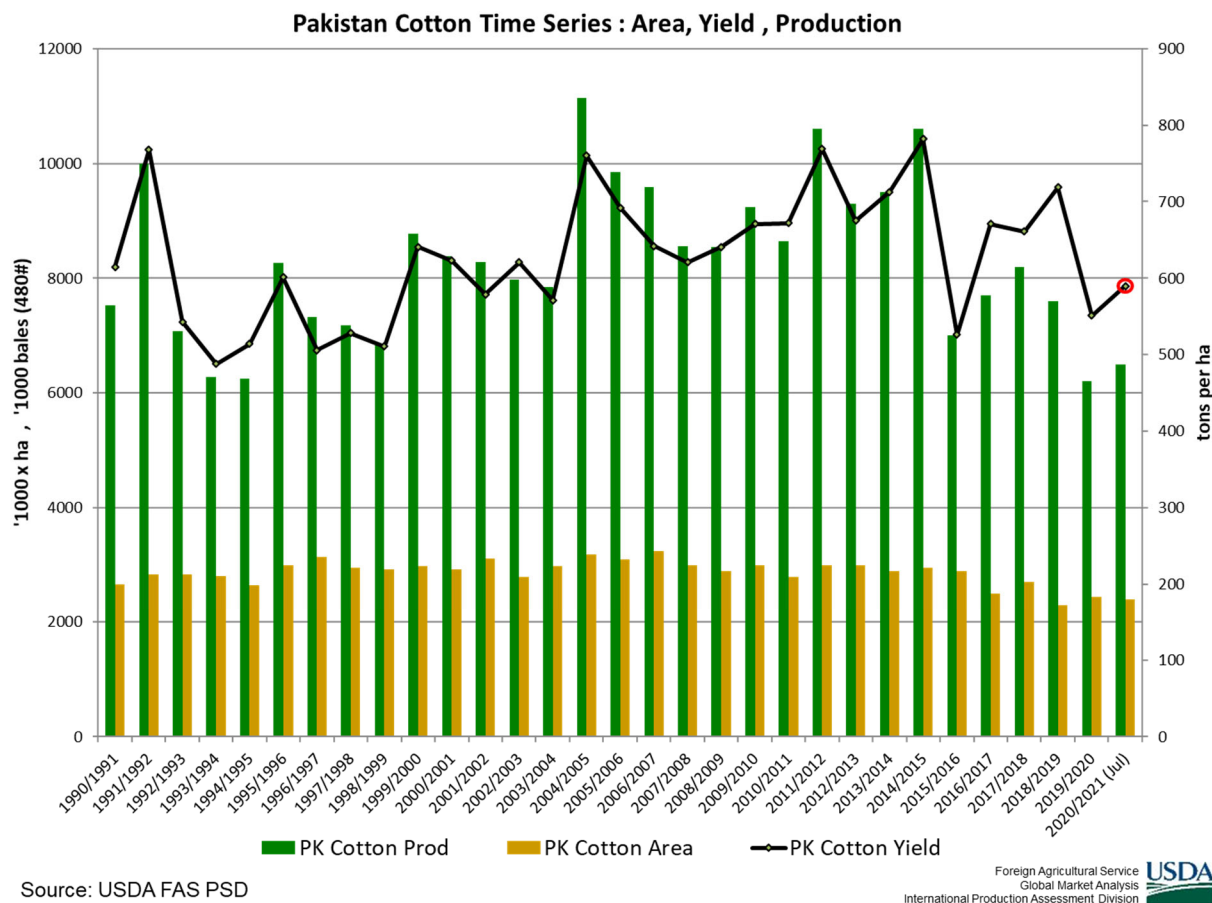
Source: Agriculture Marketing Information Service
Department of Agriculture of Pakistan
Average production of 2011/12 to 2013/14,
except for Punjab showing average production of
2016/17 to 2017/18

Foreign Agricultural Service
Global Market Analysis
International Production Assessment Division



USDA estimates Pakistan cotton production at 6.5 million 480-pound bales, up 0.2 million bales (3 percent) from last month, and up 0.3 million bales (5 percent) from last year. Harvested area is estimated at 2.4 million hectares, up 0.2 million from last month, but down 0.05 million hectares (2 percent) from last year. The yield is estimated at 590 kilograms per hectare, which is 6 percent below the five-year average of 626 kilograms per hectare.

The month-to-month yield decline is due to insect pressure and low germination rates due to poor seed quality. Production is revised up based on estimated higher sown area.



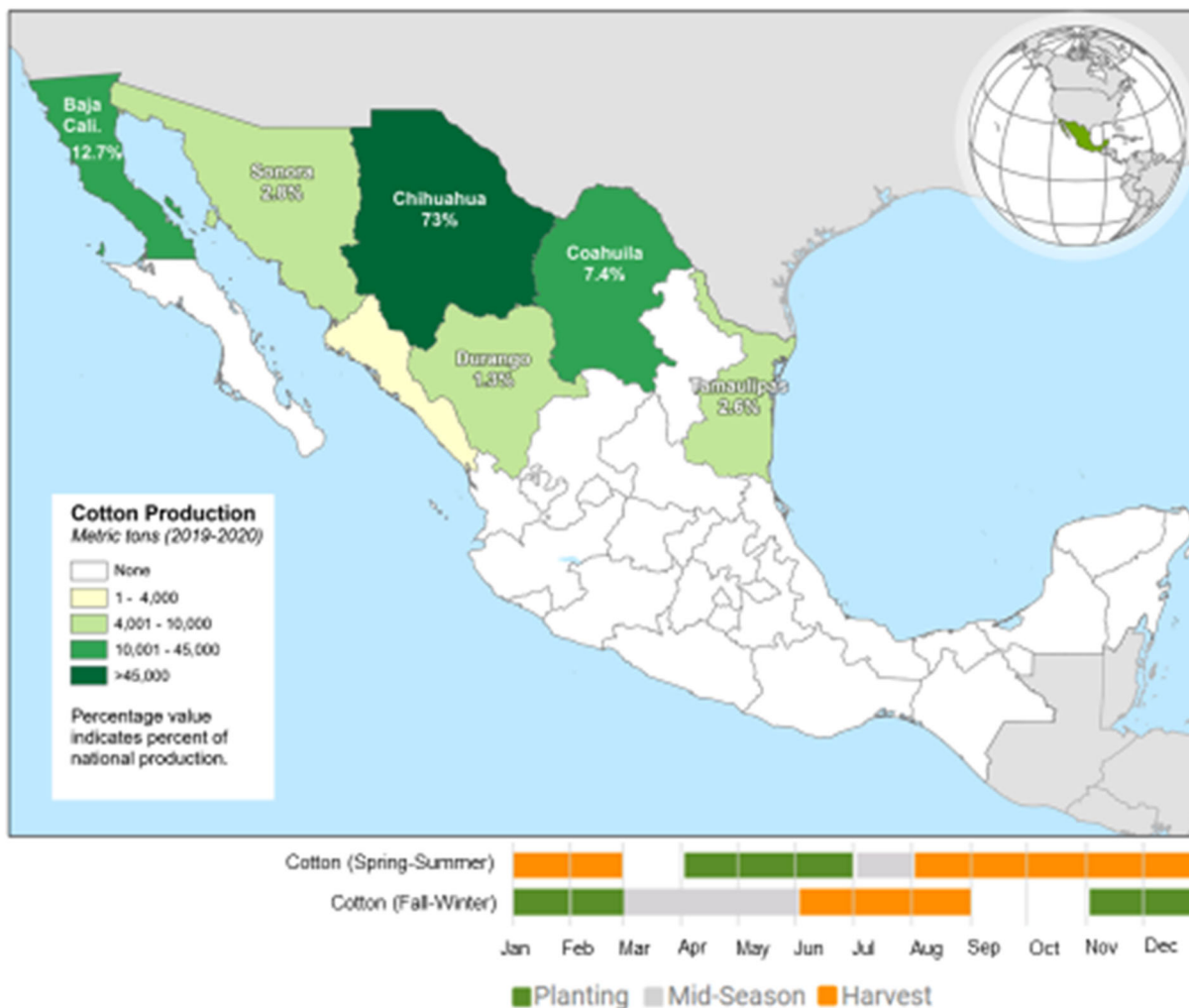
Source: USDA FAS PSD

Cotton is typically sown from April to June. Pakistan's Central Cotton Committee (PCCC) has established an area target of 2.663 million hectares for the 2020/21 season. As of July 6th, the PCCC estimated that 2.46 million hectares had been sown. USDA anticipates that sowing will only reach 90 percent of the target for the season. This will result in a final area of 2.4 million hectares. Approximately 75 percent of Pakistan's total cotton crop is produced in Punjab; the remaining 25 percent is in Sindh. *(For more information, please contact James.Crutchfield@fas.usda.gov).*

Mexico Cotton: Expected Planted Area Decreases in Major Cotton Growing States

USDA forecasts Mexico's 2020/21 cotton production at 1.05 million 480-pound bales, down 33 percent from last year's production and down 9 percent from last month. Area forecast is reduced to 160,000 hectares (ha), 29 percent less than last year and 3 percent less than last month. Yield is forecast at 1,429 kilograms per hectare, 6 percent lower than last year.

Mexico: Cotton Production

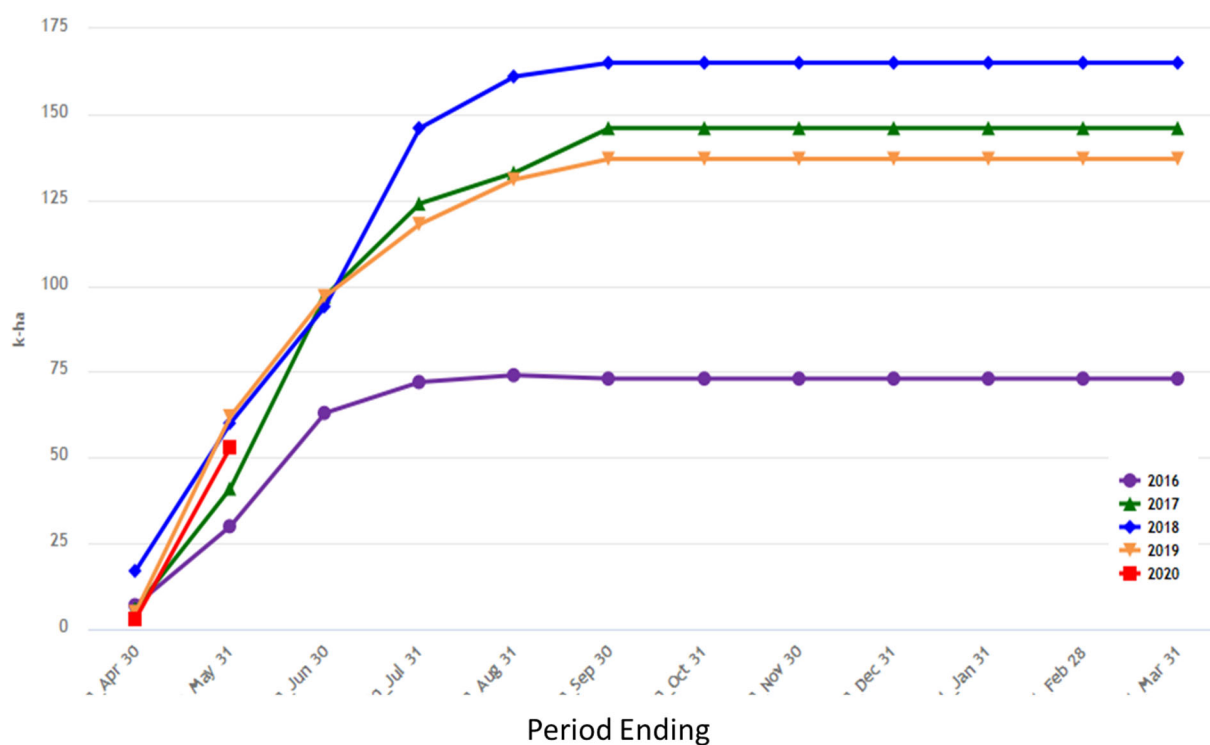


USDA Foreign Agricultural Service
Global Market Analysis
International Production Assessment Division

Source: Planting area intentions obtained from communication with SADER, State Committees of Plant Health, and with producer associations via FAS Mexico.

Chihuahua is the largest cotton producing state in Mexico. Other major cotton growing states in Mexico include Baja California, Coahuila, Tamaulipas, Sonora, and Durango. Cotton has two planting seasons in Mexico: Spring (April through July) and Winter (November through February). Cotton is mostly irrigated in Mexico; however, 78 percent of the Tamaulipas spring crop is rainfed.

Mexico, Chihuahua: Cotton (Seed Cotton) Area Planted



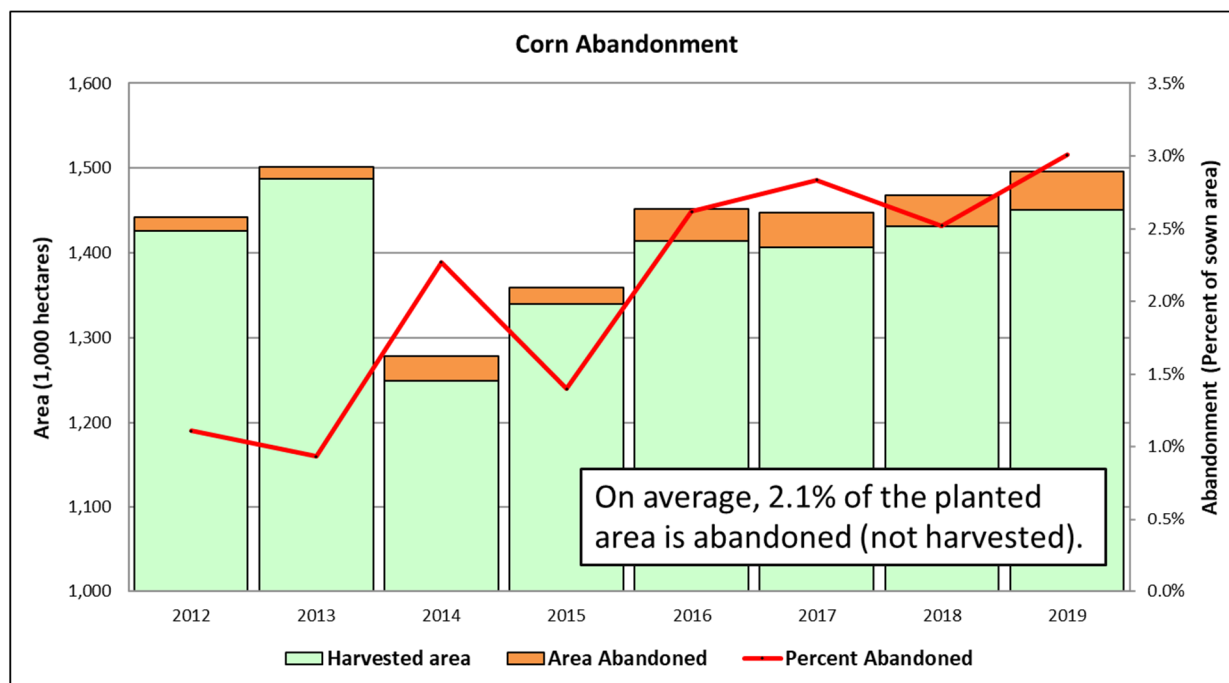

 Foreign Agricultural Service
 Global Market Analysis
 International Production Assessment Division

Source: SIAP;
 CropSignal Data Mgmt and Modeling by GDA Corp

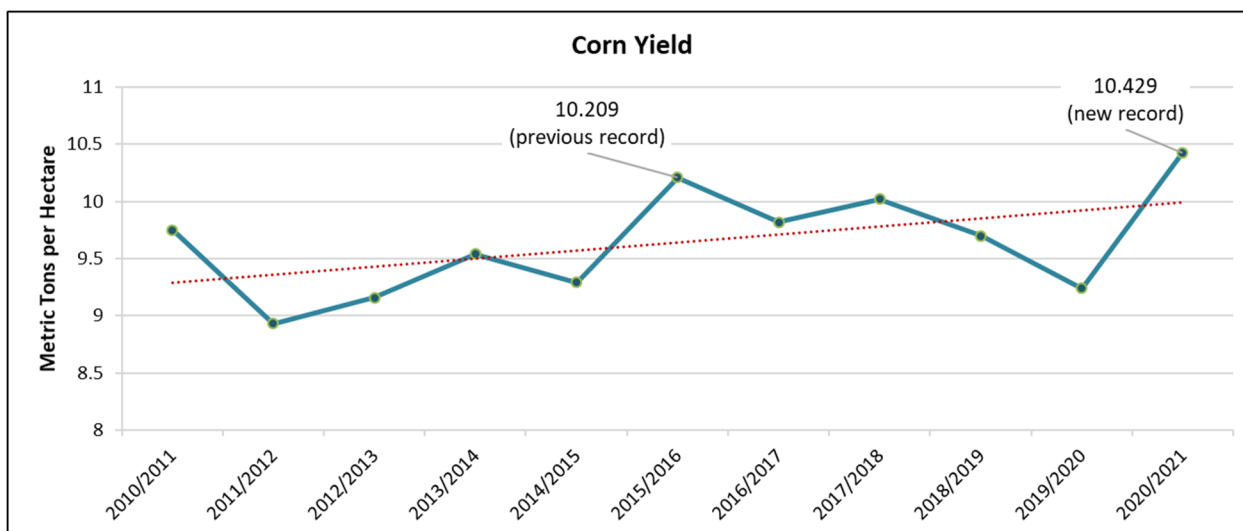
Planting of Mexico's major spring-summer cotton crop is almost complete for the 2020/2021 season. According to the Agri-Food and Fisheries Information Service (SIAP), the cotton planted area is lower than the most recent years with 88,215 ha planted as of May 31, 2020 for the spring-summer season. In Chihuahua, planting progress by the end of May had been the slowest since 2017 with about 52,630 ha planted. Representing about 13 percent of Mexico's cotton production, Baja California's planted area was estimated at 16,667 ha as of May 31, 2020, which was the lowest it had been since 2016. As of the end of May, the planted area in the third major cotton producing state of Coahuila was estimated at 13,393 ha planted, the lowest it had been since 2017. The reduction in Mexico cotton planted area has been caused by genetically engineered seed shortages and limited water availability due to drought in the summer 2019. In addition, glyphosate bans for weed management have reduced incentives to plant more cotton. *(For more information, please contact Ifeoma.Collins@usda.gov.)*

Canada Corn: Area and Production Revised Down; Record Yield Expected

USDA forecasts Canada corn production for 2020/21 at 14.6 million metric tons (mmt), down 1.0 mmt or 6 percent from last month, but up 9 percent from last year and up 6 percent from the 5-year average. The monthly decrease in estimated production is due to a revised estimate for harvested area to 1.4 million hectares (mha), down 7 percent from last month and 3 percent from last year, but similar to the 5-year average. Yield is forecast at a record 10.4 metric tons per hectare, virtually unchanged from last month, but up 13 percent from last year, 6 percent over the 5-year average, and 2 percent above the previous record yield of 10.2 metric tons per hectare in 2015.



USDA harvested area estimates have been revised based on updates reported from the second round of the annual Field Crop Survey from Statistics Canada. This iteration of the survey took place in mid-May through mid-June, collecting responses on actual farm planting, versus the planting intentions round, which was conducted in March and reported in April. The March report from Statistics Canada forecasted planted area for corn at just over 1.5 mha, and an increase of 3 percent over the planted area estimate for 2019, as farmers were expected to shift away from oilseeds. This shift did not happen, however, as farmers reported planting less acreage to corn in all three of the major corn-producing provinces: Ontario down 0.5 percent, Quebec down 5.7 percent, and Manitoba down 19.0 percent from 2019. Overall, Statistics Canada estimates just over 1.4 mha planted to corn in 2020. On average, only 2.1 percent of planted Canadian corn area is not harvested.



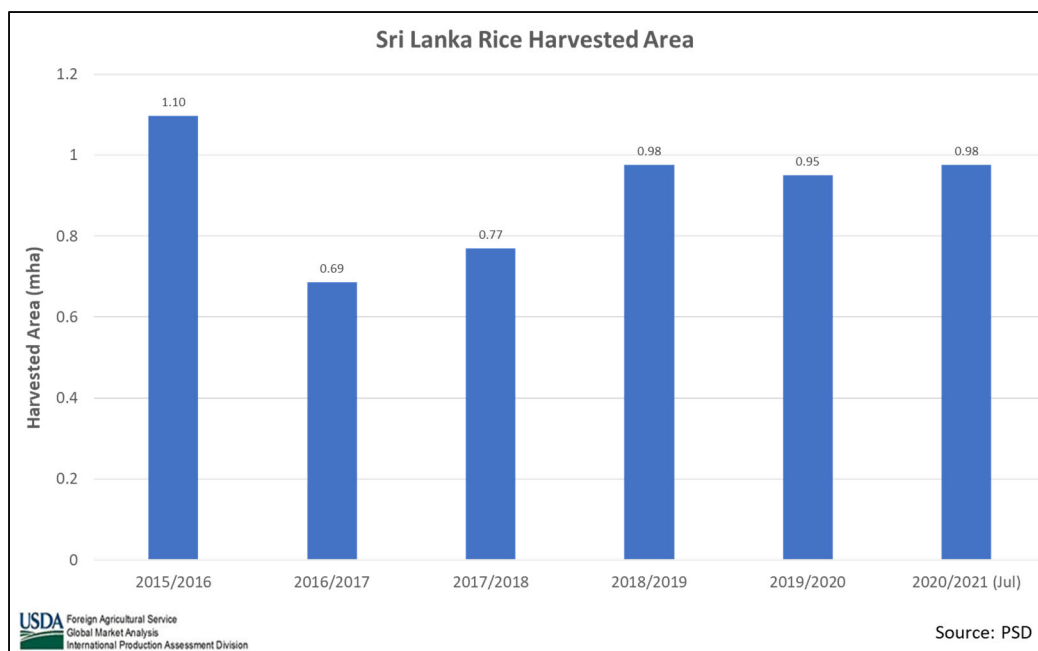
USDA Foreign Agricultural Service
Global Market Analysis
International Production Assessment Division

Source: USDA/FAS/IPAD

Yield for Canada corn is forecast to rebound to record levels due to favorable planting and early season conditions, and the planting of high-yield varieties similar to those in the United States. (For more information, please contact Aaron.Mulhollen@usda.gov.)

Sri Lanka Rice: Harvested Area Estimate Increases

Sri Lanka rough rice production is forecast at 4.4 million metric tons (mmt), up 5 percent from last month and down 4 percent from last year. Harvested area is expected to reach almost 1.0 million hectares, up nearly 3 percent from last year and unchanged from last month. The harvested area increase is based on a continuation of Government support in the form of free irrigation supplies and fertilizer subsidies.



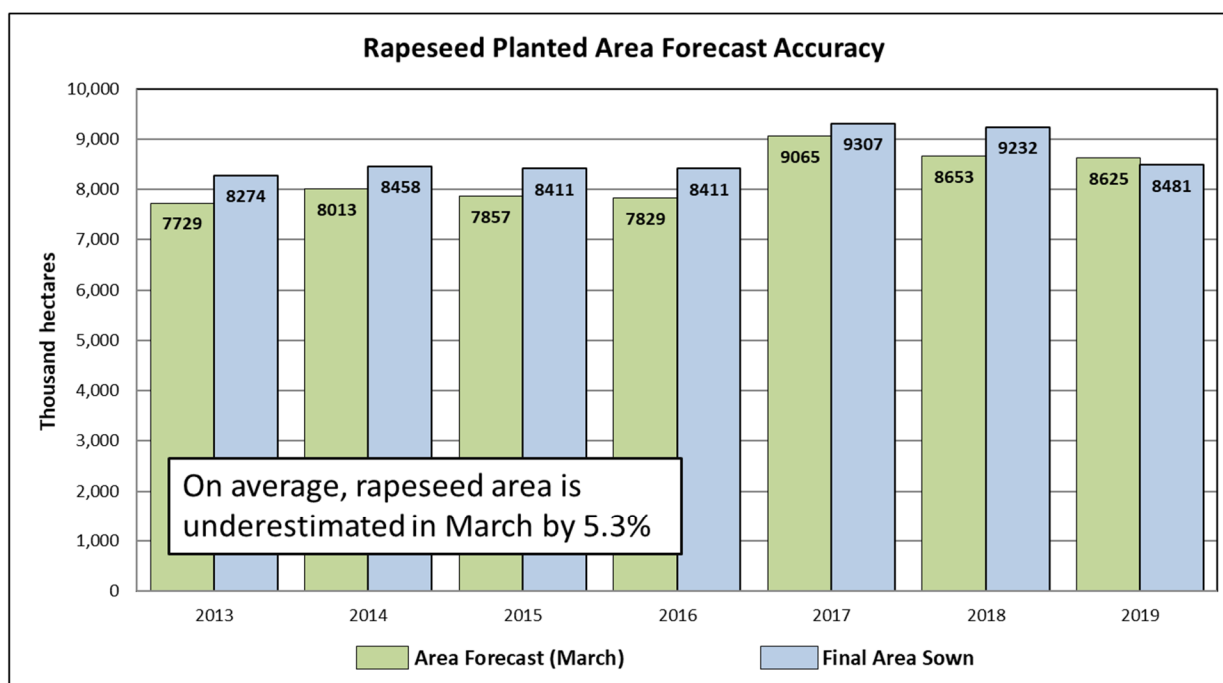
USDA Foreign Agricultural Service
Global Market Analysis
International Production Assessment Division

Source: PSD

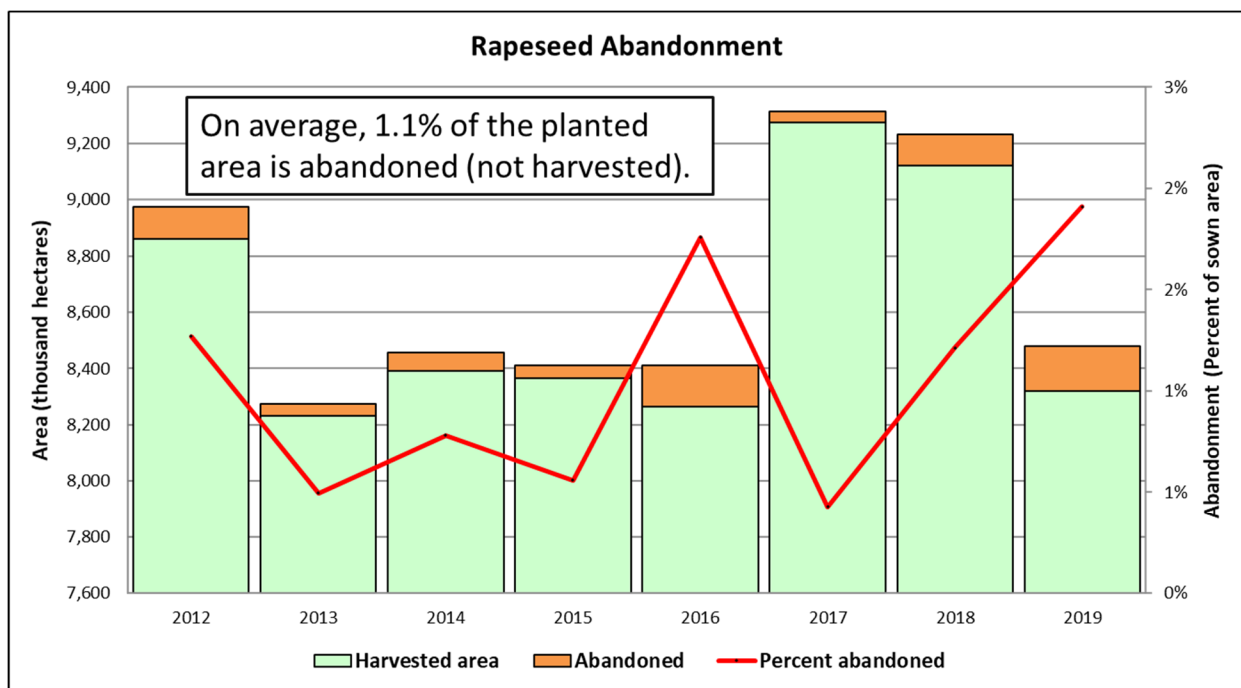
Farmers completed planting the *yala* crop in early June. The *yala* crop accounts for roughly 40 percent of total production. The *maha* crop will be planted in October. For Sri Lanka rice production, the USDA combines the *yala* crop and the *maha* crop for the total estimate. (For more information, please contact Arnella.Trent@usda.gov.)

Canada Rapeseed: Area and Production Revised Down

USDA forecasts Canada rapeseed production for 2020/21 at 19.0 million metric tons (mmt), down 0.9 mmt or 5 percent from last month, unchanged from last year and down 4 percent from the 5-year average. The decrease in forecast production is due to a revised estimate for harvested area to 8.3 million hectares (mha), down 5 percent from last month, unchanged from last year, and 4 percent below the 5-year average. Yield is forecast at 2.29 metric tons per hectare, unchanged from last month and from last year, and is virtually the same as the 5-year average.



Statistics Canada conducts an annual Field Crop Survey, iteratively, throughout the planting, growing, and harvest seasons. The first survey in March, collects crop planting intentions for grain, oilseeds and specialty crops. USDA has found that this iteration tends to underestimate planted area for rapeseed by 5.3 percent, annually. USDA also accounts for average annual crop abandonment (1.1 percent) in producing the harvested area forecast at the beginning of the market year.



USDA Foreign Agricultural Service
Global Market Analysis
International Production Assessment Division

Source: Statistics Canada

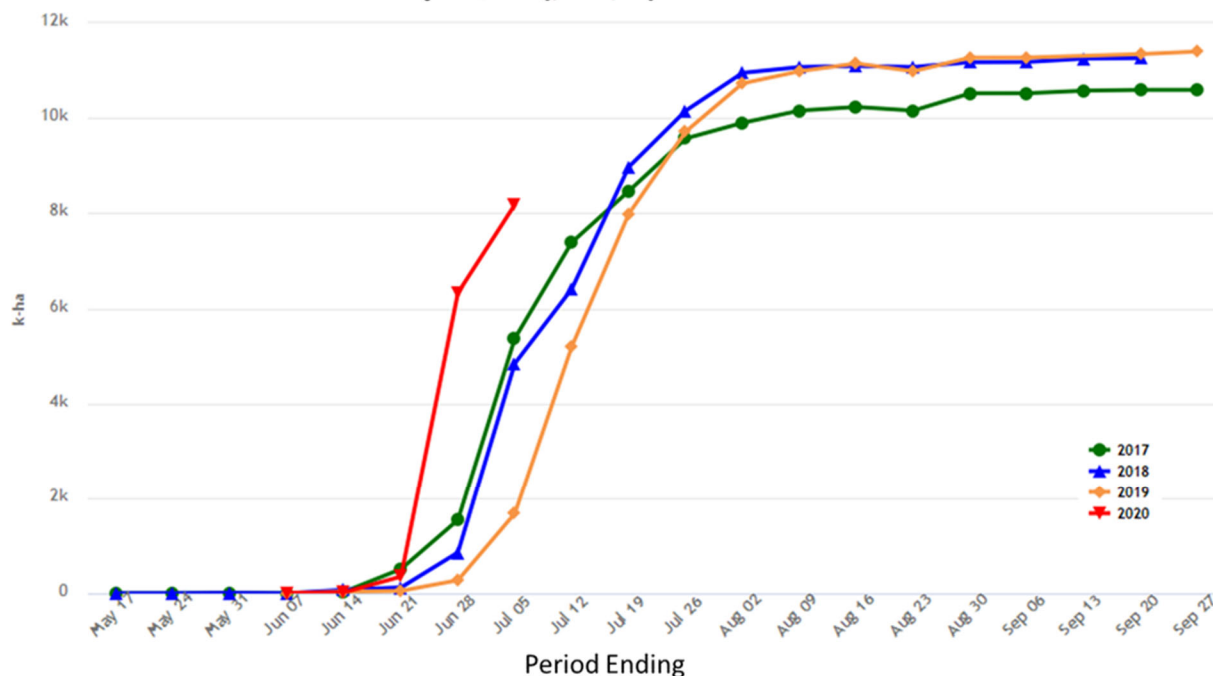
The June survey updates the planted area estimate to reflect what has been actually planted. While the underestimation bias is no longer relevant, factors such as abandonment are again incorporated into the new USDA harvested area estimate. This year, the June update indicated that Canadian farmers planted 0.8 percent less area to rapeseed than in 2019, but 0.8 percent more than the March planting intentions survey had indicated. Saskatchewan rapeseed planting is down 1.8 percent, Alberta is down 1.0 percent, while Manitoba is up 3.2 percent from 2019. Rapeseed yields have remained relatively consistent since 2015 and planting conditions have been favorable this season so far. Yields are expected at the 5-year average. (For more information, please contact Aaron.Mulhollen@usda.gov.)

India Soybean: Planting Progress is Ahead of Schedule

India's 2020/21 soybean production is forecast at 10.5 million metric tons, unchanged from last month but up 13 percent from last year based on yields returning to normal levels. Yield is forecast at 0.92 tons per hectare, up 19 percent from 2019/20. Area harvested is estimated at 11.40 million hectares, down 5 percent from last year's record area harvested.

The southwest monsoon arrived on June 1. The monsoonal rains covered the entire country twelve days ahead of the average date of July 8. The last time this happened was in June 2013. Farmers responded to the timely rains and planting progress jumped to a rapid start. As of July 3, farmers have planted nearly 8.2 million hectares or 72 percent of the expected total. India soybeans are planted in the *kharif* season only.

India: Soybeans (Kharif) Area Planted



USDA Foreign Agricultural Service
Global Market Analysis
International Production Assessment Division

Source: India DAC;
CropSignal Data Mgmt by GDA Corp

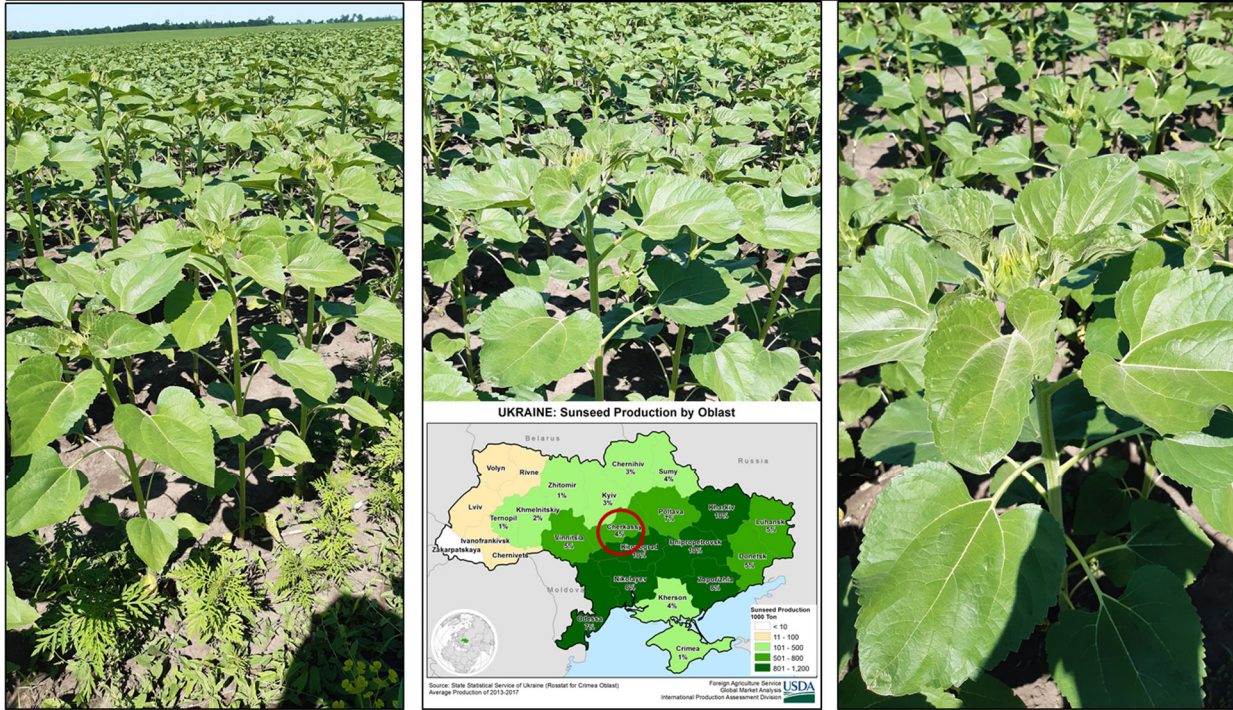
There are some concerns that desert locusts could be a challenge to early vegetation. Locusts had caused significant crop damage along the India-Pakistan border before the monsoon rains occurred. Approximately 50,000 hectares were damaged in western India, especially Rajasthan. Damage to the soybean crop has been minimal according to reports. Large swarms have been identified in the major producing areas of Madhya Pradesh and Maharashtra in late June. The government of India is using drones and Bell helicopters to spray insecticides and control the spread. *(For more information, please contact Arnella.Trent@usda.gov.)*

Ukraine Sunflowerseed: Another Record Crop

USDA forecasts Ukraine sunflowerseed production for 2020/21 at a record 17.0 million metric tons (mmt), unchanged from last month and up 3 percent from last year. Yield is estimated at 2.58 tons per hectare, unchanged from last month and last year. Total area is estimated at 6.6 million hectares, unchanged from last month and up 3 percent from last year.

Sunflowers in Cherkassy, Ukraine

Sunflowers are about 4-5 feet high and are in healthy condition.



USDA Foreign Agricultural Service
Global Market Analysis
International Production Assessment Division

Source: FAS Kyiv, June 26, 2020

As of mid-June, planting is complete. Growing conditions for the newly emerged and established crop have been favorable, especially in the central region of the country, due to a beneficial combination of moisture and temperature. FAS Kyiv visited fields in Cherkassy in late June and reported favorable growth and development. Overall, yields have been increasing since the early 2000's due to increased investment in both local and imported hybrid seeds. Sunflowers continue to be one of Ukraine's most profitable crops to grow. USDA crop production estimates for Ukraine include estimated output from Crimea. *(For more information, please contact Katie.McGaughey@usda.gov.)*



**World Agricultural Production
U.S. Department of Agriculture**

Foreign Agricultural Service / Global Market Analysis
International Production Assessment Division (IPAD)
Ag Box 1051, Room 4630, South Building
Washington, DC 20250-1051

<https://ipad.fas.usda.gov/>

Telephone: (202) 720-1662 Fax: (202) 720-1158

This report uses information from the Foreign Agricultural Service's (FAS) global network of agricultural attachés and counselors, official statistics of foreign governments and other foreign source materials, and the analysis of economic data and satellite imagery. Estimates of foreign area, yield, and production are from the International Production Assessment Division, FAS, and are reviewed by USDA's Inter-Agency Commodity Estimates Committee. Estimates of U.S. area, yield, and production are from USDA's National Agricultural Statistics Service. Numbers within the report may not add to totals because of rounding. This report reflects official USDA estimates released in the World Agricultural Supply and Demand Estimates (WASDE-584), July 10, 2020.

Printed copies are available from the National Technical Information Service. Download an order form at http://www.ntis.gov/products/specialty/usda/fas_a-g.asp, or call NTIS at 1-800-363-2068.

The FAS International Production Assessment Division prepared this report. The next issue of World Agricultural Production will be released after 12:00 p.m. Eastern Time, August 12, 2020.

Conversion Table

Metric tons to bushels

Wheat, soybeans	=	MT * 36.7437
Corn, sorghum, rye	=	MT * 39.36825
Barley	=	MT * 45.929625
Oats	=	MT * 68.894438

Metric tons to 480-lb bales

Cotton	=	MT * 4.592917
--------	---	---------------

Metric tons to hundredweight

Rice	=	MT * 22.04622
------	---	---------------

Area & weight

1 hectare	=	2.471044 acres
1 kilogram	=	2.204622 pounds

Approved by the World Agricultural Outlook Board



For further information, contact:
U.S. Department of Agriculture
Foreign Agricultural Service
Global Market Analysis

International Production Assessment Division
 Ag Box 1051, Room 4630, South Building
 Washington, DC 20250-1051

Telephone: (202) 720-1662

Fax: (202) 720-1158

GENERAL INFORMATION

Senior Director	Ronald Frantz	202-720-4056	ronald.frantz@usda.gov
Director	Robert Tetrault	202-720-1071	robert.tetrault@usda.gov
Administrative Assistant	Dionndra Williams	202-720-1662	dionndra.williams@usda.gov
USDA Remote Sensing Advisor	Vacant		
Sr. Analyst/Technical Lead	Curt Reynolds, Ph.D.	202-690-0134	curt.reynolds@usda.gov
Sr. Analyst/ Satellite Imagery Archives Manager/Technical Lead	Dath Mita, Ph.D.	202-720-7339	dath.mita@usda.gov
Sr. Analyst/Technical Lead	Jim Crutchfield	202-690-0135	james.crutchfield@usda.gov
GIS Mapping/Imagery Analyst	Lisa Colson	202-720-6652	lisa.colson@usda.gov
WAP Coordinators	Ifeoma Collins	202-720-0240	ifeoma.collins@usda.gov
	Aaron Mulhollen	202-690-0131	aaron.mulhollen@usda.gov

COUNTRY- AND REGION-SPECIFIC INFORMATION

South America, Argentina, Venezuela, and Colombia	Denise McWilliams, Ph.D.	202-720-0107	denise.mcwilliams@usda.gov
Western and Central Europe, and North Africa	Bryan Purcell	202-690-0138	bryan.purcell@usda.gov
Russia, Ukraine, Kazakhstan, Moldova, and Belarus	Katie McGaughey	202-720-9210	katie.mcgaughey@usda.gov
South Asia, Sri Lanka Bangladesh, India, and Nepal	Arnella Trent	202-720-0881	arnella.trent@usda.gov
East Asia, China, and Japan	Dath Mita, Ph.D.	202-720-7339	dath.mita@usda.gov
Sub-Saharan Africa, Nigeria and South Africa	Curt Reynolds, Ph.D.	202-690-0134	curt.reynolds@usda.gov
S.E. Asia, Indonesia, Thailand, Malaysia, Cambodia and Vietnam	Justin Jenkins	202-720-0419	justin.jenkins@usda.gov
Central America, Mexico, and Western United States	Ifeoma Collins	202-720-0240	ifeoma.collins@usda.gov
Australia, New Zealand, Pakistan Papua New Guinea and South Pacific Islands	Jim Crutchfield	202-690-0135	james.crutchfield@usda.gov
Middle East, Central Asia, Afghanistan Iraq, Iran, and Syria	Iliana Mladenova, Ph.D.		iliana.mladenova@usda.gov
Canada, Caribbean, Eastern United States	Aaron Mulhollen	202-690-0131	aaron.mulhollen@usda.gov
Brazil	Sunita Yadav-Pauletti, Ph.D.		sunita.yadav-pauletti@usda.gov



The Foreign Agricultural Service (FAS) updates its production, supply and distribution (PSD) database for cotton, oilseeds, and grains at 12:00 p.m. on the day the *World Agricultural Supply and Demand Estimates* (WASDE) report is released. This circular is released by 12:15 p.m.

FAS Reports and Databases:

Current *World Market and Trade and World Agricultural Production Reports*:

<http://apps.fas.usda.gov/psdonline/psdDataPublications.aspx>

Archives *World Market and Trade and World Agricultural Production Reports*:

<http://usda.mannlib.cornell.edu/MannUsda/viewTaxonomy.do?taxonomyID=7>

Production, Supply and Distribution Database (PSD Online):

<http://apps.fas.usda.gov/psdonline/psdHome.aspx>

EU Countries Area & Production Estimates

<http://apps.fas.usda.gov/psdonline/psdDownload.aspx>

Global Agricultural Trade System (U.S. Exports and Imports):

<http://apps.fas.usda.gov/gats/default.aspx>

Export Sales Report:

<http://apps.fas.usda.gov/esrquery/>

Global Agricultural Information Network (Agricultural Attaché Reports):

<http://gain.fas.usda.gov/Pages/Default.aspx>

Other USDA Reports:

World Agricultural Supply and Demand Estimates (WASDE):

<http://www.usda.gov/oce/commodity/wasde/>

Economic Research Service:

<http://www.ers.usda.gov/topics/crops>

National Agricultural Statistics Service:

<http://www.nass.usda.gov/Publications/>

Table 01 World Crop Production Summary

Million Metric Tons

Commodity	World -	Total Foreign	North America			Former Soviet		European	Asia (WAP)					South America		Selected Other			All Others
			United States	Canada -	Mexico -	Russia -	Ukraine -		China -	India -	Indonesia	Pakistan	Thailand	Argentina	Brazil -	Australia	South Africa	Turkey -	
---Million metric tons---																			
Wheat																			
2018/19	730.9	679.6	51.3	32.2	3.0	71.7	25.1	nr	131.4	99.9	0.0	25.1	0.0	19.5	5.4	17.6	1.9	19.0	227.9
2019/20 prel.	764.8	712.6	52.3	32.3	3.2	73.6	29.2	nr	133.6	103.6	0.0	24.3	0.0	19.7	5.2	15.2	1.5	18.5	252.6
2020/21 proj.																			
Jun	773.4	722.3	51.1	34.0	3.3	77.0	26.5	nr	136.0	107.2	0.0	26.1	0.0	21.0	5.5	26.0	1.7	19.5	238.6
Jul	769.3	719.7	49.6	34.0	3.1	76.5	26.5	nr	136.0	107.2	0.0	26.1	0.0	21.0	5.7	26.0	1.7	19.5	236.5
Coarse Grains																			
2018/19	1,397.1	1,019.2	377.9	26.2	33.4	35.0	44.5	nr	264.5	43.2	12.0	6.6	5.7	59.2	104.3	11.5	12.4	13.3	347.4
2019/20 prel.	1,406.8	1,047.5	359.3	28.5	30.4	40.5	46.5	nr	268.2	47.5	11.9	7.4	5.3	56.8	104.6	10.4	16.7	14.5	358.3
2020/21 proj.																			
Jun	1,484.6	1,064.1	420.5	30.3	33.6	39.2	49.5	nr	267.4	44.5	12.0	7.5	5.7	56.7	110.4	13.7	14.6	15.8	363.2
Jul	1,458.4	1,064.1	394.3	29.9	33.6	40.0	49.5	nr	267.4	44.5	12.0	7.5	5.7	56.7	110.4	13.7	14.6	15.8	362.9
Rice, Milled																			
2018/19	496.6	489.5	7.1	0.0	0.2	0.7	0.0	nr	148.5	116.5	34.2	7.3	20.3	0.8	7.1	0.0	0.0	0.6	153.2
2019/20 prel.	495.2	489.4	5.9	0.0	0.2	0.7	0.0	nr	146.7	117.9	33.5	7.2	18.0	0.8	7.6	0.0	0.0	0.6	156.1
2020/21 proj.																			
Jun	502.1	495.2	6.9	0.0	0.2	0.7	0.0	nr	149.0	118.0	34.9	7.5	20.4	0.8	7.2	0.3	0.0	0.6	155.6
Jul	502.6	495.6	7.0	0.0	0.2	0.7	0.0	nr	149.0	118.0	34.9	7.5	20.4	0.8	7.2	0.3	0.0	0.6	156.0
Total Grains																			
2018/19	2,624.6	2,188.3	436.3	58.4	36.6	107.4	69.6	nr	544.4	259.6	46.2	39.0	26.0	79.5	116.9	29.2	14.3	32.9	728.4
2019/20 prel.	2,666.9	2,249.4	417.4	60.9	33.8	114.8	75.8	nr	548.5	269.0	45.4	38.9	23.3	77.3	117.3	25.7	18.3	33.6	767.0
2020/21 proj.																			
Jun	2,760.1	2,281.7	478.5	64.3	37.1	116.9	76.1	nr	552.4	269.7	46.9	41.1	26.1	78.5	123.1	40.0	16.3	35.9	757.4
Jul	2,730.3	2,279.4	450.9	63.9	36.8	117.2	76.1	nr	552.4	269.7	46.9	41.1	26.1	78.5	123.3	40.0	16.3	35.9	755.3
Oilseeds																			
2018/19	600.3	469.6	130.7	27.7	1.3	18.7	22.7	nr	60.0	35.5	14.1	3.8	1.0	61.0	123.9	3.1	2.0	3.4	91.4
2019/20 prel.	577.1	470.1	107.0	25.1	1.1	21.7	24.0	nr	62.6	37.2	14.4	3.3	1.1	55.2	131.1	2.6	2.1	3.2	85.4
2020/21 proj.																			
Jun	606.2	483.0	123.2	26.1	1.1	22.3	24.6	nr	61.9	36.7	14.6	3.4	1.1	59.3	135.7	3.9	2.1	3.1	87.0
Jul	604.2	481.4	122.8	24.9	1.1	22.3	24.6	nr	61.9	36.7	14.6	3.5	1.1	59.3	135.7	3.9	2.1	3.0	86.7
Cotton																			
2018/19	118.7	100.3	18.4	0.0	1.7	0.0	0.0	1.7	27.8	25.8	0.0	7.6	0.0	1.1	13.0	2.2	0.2	3.8	15.4
2019/20 prel.	123.0	103.0	19.9	0.0	1.6	0.0	0.0	2.0	27.3	30.5	0.0	6.2	0.0	1.4	13.2	0.6	0.1	3.5	16.7
2020/21 proj.																			
Jun	118.7	99.2	19.5	0.0	1.2	0.0	0.0	2.0	26.5	28.5	0.0	6.3	0.0	1.4	12.0	1.7	0.2	3.3	16.3
Jul	116.2	98.7	17.5	0.0	1.1	0.0	0.0	1.9	26.5	28.5	0.0	6.5	0.0	1.3	12.0	1.7	0.2	3.0	16.1

1/ Includes wheat, coarse grains, and rice (milled) shown above.

Table 02 Wheat Area, Yield, and Production

Country / Region	Area (Million hectares)				Yield (Metric tons per hectare)				Production (Million metric tons)				Change in Production			
	Prel.		2020/21 Proj.		Prel.		2020/21 Proj.		Prel.		2020/21 Proj.		From last month		From last year	
	2018/19	2019/20	Jun	Jul	2018/19	2019/20	Jun	Jul	2018/19	2019/20	Jun	Jul	MMT	Percent	MMT	Percent
World	215.50	216.96	220.96	220.83	3.39	3.53	3.50	3.48	730.89	764.83	773.43	769.31	-4.12	-0.53	4.49	0.59
United States	16.03	15.04	15.24	14.84	3.20	3.47	3.35	3.34	51.31	52.26	51.09	49.63	-1.46	-2.85	-2.63	-5.03
Total Foreign	199.47	201.92	205.72	205.98	3.41	3.53	3.51	3.49	679.59	712.57	722.35	719.68	-2.67	-0.37	7.12	1.00
European Union - 28	25.52	26.14	25.25	25.25	5.36	5.93	5.58	5.52	136.69	154.94	141.00	139.50	-1.50	-1.06	-15.44	-9.96
China	24.27	23.73	24.00	24.00	5.42	5.63	5.67	5.67	131.43	133.59	136.00	136.00	0.00	0.00	2.41	1.80
South Asia																
India	29.65	29.32	30.55	30.55	3.37	3.53	3.51	3.51	99.87	103.60	107.18	107.18	0.00	0.00	3.58	3.46
Pakistan	8.80	8.80	9.13	9.13	2.85	2.76	2.86	2.86	25.10	24.30	26.10	26.10	0.00	0.00	1.80	7.41
Afghanistan	2.00	2.30	2.33	2.33	1.80	2.17	2.15	2.15	3.60	5.00	5.01	5.01	0.00	0.00	0.01	0.20
Nepal	0.76	0.76	0.76	0.76	2.55	2.55	2.55	2.55	1.94	1.94	1.94	1.94	0.00	0.00	0.00	0.00
Former Soviet Union - 12																
Russia	26.34	27.31	27.50	27.70	2.72	2.70	2.80	2.76	71.69	73.61	77.00	76.50	-0.50	-0.65	2.89	3.93
Russia Winter	14.91	15.41	15.60	15.60	3.52	3.41	3.65	3.59	52.47	52.54	57.00	56.00	-1.00	-1.75	3.46	6.59
Russia Spring	11.44	11.91	11.90	12.10	1.68	1.77	1.68	1.69	19.22	21.07	20.00	20.50	0.50	2.50	-0.57	-2.71
Ukraine	6.72	7.02	6.80	6.80	3.73	4.16	3.90	3.90	25.06	29.17	26.50	26.50	0.00	0.00	-2.67	-9.16
Kazakhstan	11.35	11.34	11.25	11.25	1.23	1.01	1.20	1.20	13.95	11.45	13.50	13.50	0.00	0.00	2.05	17.88
Uzbekistan	1.40	1.40	1.40	1.40	4.29	4.86	4.65	4.65	6.00	6.80	6.51	6.51	0.00	0.00	-0.29	-4.26
Belarus	0.66	0.75	0.70	0.70	2.75	3.83	3.29	3.29	1.82	2.88	2.30	2.30	0.00	0.00	-0.58	-20.00
Canada	9.88	9.66	9.80	9.80	3.26	3.35	3.47	3.47	32.20	32.35	34.00	34.00	0.00	0.00	1.65	5.11
South America																
Argentina	6.05	6.72	6.50	6.50	3.22	2.94	3.23	3.23	19.50	19.75	21.00	21.00	0.00	0.00	1.26	6.36
Brazil	2.04	2.04	2.10	2.18	2.66	2.55	2.62	2.62	5.43	5.20	5.50	5.70	0.20	3.64	0.50	9.62
Uruguay	0.20	0.23	0.22	0.22	3.68	3.30	3.36	3.36	0.73	0.76	0.74	0.74	0.00	0.00	-0.02	-2.63
Australia	10.40	10.20	13.00	13.00	1.69	1.49	2.00	2.00	17.60	15.20	26.00	26.00	0.00	0.00	10.80	71.05
Africa																
Egypt	1.32	1.37	1.39	1.39	6.40	6.40	6.40	6.40	8.45	8.77	8.90	8.90	0.00	0.00	0.13	1.48
Morocco	2.85	2.75	2.70	2.70	2.58	1.46	1.30	1.00	7.34	4.03	3.50	2.70	-0.80	-22.86	-1.33	-32.92
Ethiopia	1.75	1.80	1.85	1.85	2.42	2.74	2.72	2.72	4.24	4.93	5.03	5.03	0.00	0.00	0.10	2.03
Algeria	2.07	2.07	2.08	2.08	1.90	1.90	1.81	1.88	3.94	3.95	3.75	3.90	0.15	4.00	-0.05	-1.27
Middle East																
Turkey	7.62	7.00	7.25	7.25	2.50	2.64	2.69	2.69	19.00	18.50	19.50	19.50	0.00	0.00	1.00	5.41
Iran	6.70	6.70	6.70	6.70	2.16	2.51	2.50	2.50	14.50	16.80	16.75	16.75	0.00	0.00	-0.05	-0.30
Iraq	1.70	2.40	2.40	2.40	1.76	2.00	2.00	2.00	3.00	4.80	4.80	4.80	0.00	0.00	0.00	0.00
Syria	1.10	1.60	1.60	1.60	1.82	3.00	2.81	2.81	2.00	4.80	4.50	4.50	0.00	0.00	-0.30	-6.25
Mexico	0.54	0.59	0.61	0.55	5.56	5.42	5.45	5.55	3.00	3.22	3.30	3.05	-0.25	-7.58	-0.17	-5.13
Serbia	0.65	0.57	0.57	0.57	4.92	4.39	4.74	4.74	3.20	2.50	2.70	2.70	0.00	0.00	0.20	8.00
Others	7.12	7.35	7.29	7.33	2.57	2.69	2.65	2.64	18.33	19.75	19.34	19.38	0.04	0.18	-0.38	-1.90

Table 03 Total Coarse Grain Area, Yield, and Production

Country / Region	Area (Million hectares)				Yield (Metric tons per hectare)				Production (Million metric tons)				Change in Production			
	2018/19	Prel.	2020/21 Proj.		2018/19	Prel.	2020/21 Proj.		2018/19	Prel.	2020/21 Proj.		From last month		From last year	
		2019/20	Jun	Jul		2019/20	Jun	Jul		2019/20	Jun	Jul	MMT	Percent	MMT	Percent
World	330.93	332.30	338.82	336.73	4.22	4.23	4.38	4.33	1,397.10	1,406.81	1,484.61	1,458.40	-26.21	-1.77	51.59	3.67
United States	36.20	36.14	39.92	37.43	10.44	9.94	10.53	10.53	377.91	359.30	420.50	394.27	-26.23	-6.24	34.97	9.73
Total Foreign	294.73	296.16	298.90	299.30	3.46	3.54	3.56	3.56	1,019.20	1,047.51	1,064.11	1,064.13	0.03	0.00	16.62	1.59
China	44.48	43.72	44.42	44.42	5.95	6.14	6.02	6.02	264.51	268.20	267.38	267.38	0.00	0.00	-0.82	-0.31
European Union	29.25	30.12	30.47	30.41	5.07	5.35	5.40	5.39	148.27	161.24	164.44	163.91	-0.53	-0.32	2.67	1.66
South America																
Brazil	18.72	19.67	20.18	20.18	5.57	5.32	5.47	5.47	104.33	104.57	110.41	110.41	0.00	0.00	5.83	5.58
Argentina	8.22	7.98	7.90	7.90	7.20	7.12	7.18	7.18	59.22	56.75	56.70	56.70	0.00	0.00	-0.05	-0.09
Former Soviet Union - 12																
Russia	14.03	14.51	14.40	14.55	2.50	2.79	2.72	2.75	35.00	40.50	39.20	40.00	0.80	2.04	-0.50	-1.22
Ukraine	7.58	8.22	8.54	8.54	5.87	5.67	5.80	5.80	44.50	46.55	49.55	49.55	0.00	0.00	3.00	6.45
Kazakhstan	2.97	3.45	3.25	3.25	1.76	1.47	1.75	1.75	5.23	5.06	5.68	5.68	0.00	0.00	0.62	12.24
Belarus	1.01	0.90	0.93	0.93	2.91	3.78	3.30	3.30	2.93	3.40	3.07	3.07	0.00	0.00	-0.33	-9.71
Africa																
Nigeria	14.30	14.40	14.40	14.40	1.39	1.37	1.38	1.38	19.84	19.67	19.90	19.90	0.00	0.00	0.24	1.20
South Africa	2.81	3.13	2.92	2.92	4.43	5.35	5.01	5.01	12.42	16.75	14.63	14.63	0.00	0.00	-2.12	-12.65
Tanzania	5.22	5.35	5.35	5.35	1.36	1.37	1.34	1.34	7.12	7.35	7.15	7.15	0.00	0.00	-0.20	-2.72
Burkina	4.32	3.90	3.90	3.90	1.12	1.18	1.13	1.13	4.82	4.59	4.40	4.40	0.00	0.00	-0.19	-4.03
Ethiopia	5.64	5.60	5.60	5.60	2.92	3.05	3.07	3.07	16.47	17.10	17.20	17.20	0.00	0.00	0.10	0.58
Egypt	1.07	1.02	1.02	1.02	7.14	7.09	7.09	7.09	7.66	7.26	7.26	7.26	0.00	0.00	0.00	0.00
Mali	4.63	4.70	4.70	4.70	1.50	1.48	1.40	1.40	6.94	6.94	6.60	6.60	0.00	0.00	-0.34	-4.83
India	22.23	23.36	23.32	23.32	1.94	2.03	1.91	1.91	43.21	47.51	44.49	44.49	0.00	0.00	-3.02	-6.35
Southeast Asia																
Indonesia	3.70	3.80	3.70	3.70	3.24	3.13	3.24	3.24	12.00	11.90	12.00	12.00	0.00	0.00	0.10	0.84
Philippines	2.48	2.50	2.60	2.60	3.07	3.18	3.15	3.15	7.61	7.95	8.20	8.20	0.00	0.00	0.25	3.14
Vietnam	0.98	0.94	0.94	0.94	4.74	4.74	4.68	4.68	4.65	4.46	4.40	4.40	0.00	0.00	-0.06	-1.35
Thailand	1.32	1.24	1.29	1.29	4.29	4.23	4.39	4.39	5.68	5.25	5.65	5.65	0.00	0.00	0.40	7.62
Mexico	8.95	8.53	9.06	9.06	3.73	3.56	3.71	3.71	33.40	30.41	33.60	33.60	0.00	0.00	3.19	10.49
Canada	5.00	5.53	5.56	5.63	5.24	5.16	5.45	5.31	26.20	28.51	30.30	29.90	-0.41	-1.34	1.38	4.85
Australia	6.06	5.01	5.89	5.89	1.90	2.08	2.32	2.32	11.51	10.44	13.66	13.66	0.00	0.00	3.22	30.85
Middle East																
Turkey	4.34	4.53	4.61	4.61	3.05	3.19	3.43	3.43	13.25	14.45	15.81	15.81	0.00	0.00	1.36	9.41
Iran	1.73	1.91	1.91	1.91	2.32	2.63	2.71	2.71	4.02	5.02	5.17	5.17	0.00	0.00	0.15	2.99
Others	73.67	72.15	72.06	72.30	1.61	1.60	1.63	1.62	118.42	115.72	117.28	117.44	0.16	0.14	1.72	1.48

World and Selected Countries and Regions; Coarse Grain includes: Barley, Corn, Millet, Mixed Grains, Oats, Rye and Sorghum

Table 04 Corn Area, Yield, and Production

Country / Region	Area (Million hectares)				Yield (Metric tons per hectare)				Production (Million metric tons)				Change in Production			
	2018/19	Prel.	2020/21 Proj.		2018/19	Prel.	2020/21 Proj.		2018/19	Prel.	2020/21 Proj.		From last month		From last year	
		2019/20	Jun	Jul		2019/20	Jun	Jul		2019/20	Jun	Jul	MMT	Percent	MMT	Percent
World	191.90	192.45	198.13	196.08	5.85	5.79	6.00	5.93	1,123.28	1,113.55	1,188.48	1,163.21	-25.26	-2.13	49.66	4.46
United States	32.89	32.91	36.26	34.00	11.07	10.51	11.20	11.21	364.26	345.89	406.29	381.02	-25.27	-6.22	35.12	10.15
Total Foreign	159.00	159.54	161.87	162.07	4.77	4.81	4.83	4.83	759.02	767.65	782.18	782.19	0.01	0.00	14.54	1.89
China	42.13	41.28	42.00	42.00	6.11	6.32	6.19	6.19	257.33	260.77	260.00	260.00	0.00	0.00	-0.77	-0.30
South America																
Brazil	17.50	18.40	18.90	18.90	5.77	5.49	5.66	5.66	101.00	101.00	107.00	107.00	0.00	0.00	6.00	5.94
Argentina	6.10	6.20	6.20	6.20	8.36	8.06	8.06	8.06	51.00	50.00	50.00	50.00	0.00	0.00	0.00	0.00
Bolivia	0.47	0.48	0.35	0.50	2.11	2.39	2.83	2.40	0.99	1.15	0.99	1.20	0.21	21.21	0.06	4.80
European Union	8.28	8.90	9.00	9.00	7.77	7.49	7.59	7.59	64.36	66.67	68.30	68.30	0.00	0.00	1.64	2.45
Africa																
South Africa	2.60	2.91	2.70	2.70	4.55	5.58	5.19	5.19	11.82	16.25	14.00	14.00	0.00	0.00	-2.25	-13.85
Nigeria	6.50	6.50	6.50	6.50	1.69	1.69	1.69	1.69	11.00	11.00	11.00	11.00	0.00	0.00	0.00	0.00
Ethiopia	2.30	2.30	2.30	2.30	3.63	3.70	3.74	3.74	8.35	8.50	8.60	8.60	0.00	0.00	0.10	1.18
Egypt	0.85	0.80	0.80	0.80	8.00	8.00	8.00	8.00	6.80	6.40	6.40	6.40	0.00	0.00	0.00	0.00
Tanzania	4.10	4.20	4.20	4.20	1.46	1.48	1.43	1.43	5.99	6.20	6.00	6.00	0.00	0.00	-0.20	-3.23
Malawi	1.69	1.70	1.70	1.70	1.60	2.00	2.00	2.00	2.70	3.39	3.40	3.40	0.00	0.00	0.01	0.24
Zambia	1.09	0.84	1.29	1.29	2.21	2.38	2.62	2.62	2.40	2.00	3.39	3.39	0.00	0.00	1.38	69.01
Kenya	2.14	2.00	2.00	2.00	1.87	1.90	1.70	1.70	4.01	3.80	3.40	3.40	0.00	0.00	-0.40	-10.53
Uganda	1.13	1.15	1.15	1.15	2.30	2.24	2.43	2.43	2.60	2.58	2.80	2.80	0.00	0.00	0.23	8.74
Zimbabwe	1.72	1.62	1.50	1.50	0.99	0.48	0.57	0.57	1.70	0.78	0.85	0.85	0.00	0.00	0.07	9.40
Former Soviet Union - 12																
Ukraine	4.57	4.99	5.35	5.35	7.84	7.19	7.29	7.29	35.81	35.89	39.00	39.00	0.00	0.00	3.11	8.67
Russia	2.37	2.50	2.60	2.75	4.81	5.70	5.58	5.56	11.42	14.28	14.50	15.30	0.80	5.52	1.03	7.18
South Asia																
India	9.03	9.27	9.00	9.00	3.07	3.12	3.06	3.06	27.72	28.90	27.50	27.50	0.00	0.00	-1.40	-4.84
Pakistan	1.32	1.33	1.39	1.39	4.62	5.19	5.05	5.05	6.10	6.90	7.00	7.00	0.00	0.00	0.10	1.45
Nepal	0.90	0.90	0.90	0.90	2.83	2.83	2.83	2.83	2.55	2.55	2.55	2.55	0.00	0.00	0.00	0.00
Southeast Asia																
Indonesia	3.70	3.80	3.70	3.70	3.24	3.13	3.24	3.24	12.00	11.90	12.00	12.00	0.00	0.00	0.10	0.84
Philippines	2.48	2.50	2.60	2.60	3.07	3.18	3.15	3.15	7.61	7.95	8.20	8.20	0.00	0.00	0.25	3.14
Vietnam	0.98	0.94	0.94	0.94	4.74	4.74	4.68	4.68	4.65	4.46	4.40	4.40	0.00	0.00	-0.06	-1.35
Thailand	1.30	1.22	1.26	1.26	4.34	4.28	4.44	4.44	5.63	5.20	5.60	5.60	0.00	0.00	0.40	7.69
Mexico	7.20	6.80	7.30	7.30	3.83	3.68	3.84	3.84	27.60	25.00	28.00	28.00	0.00	0.00	3.00	12.00
Canada	1.43	1.45	1.50	1.40	9.70	9.26	10.40	10.43	13.89	13.38	15.60	14.60	-1.00	-6.41	1.23	9.16
Turkey	0.53	0.52	0.60	0.60	10.75	11.54	11.42	11.42	5.70	6.00	6.85	6.85	0.00	0.00	0.85	14.17
Others	24.61	24.04	24.15	24.15	2.70	2.69	2.69	2.69	66.32	64.78	64.86	64.86	0.00	0.00	0.08	0.12

World and Selected Countries and Regions

Table 05 Barley Area, Yield, and Production

Country / Region	Area (Million hectares)				Yield (Metric tons per hectare)				Production (Million metric tons)				Change in Production			
	2018/19	Prel.	2020/21 Proj.		2018/19	Prel.	2020/21 Proj.		2018/19	Prel.	2020/21 Proj.		From last month		From last year	
		2019/20	Jun	Jul		2019/20	Jun	Jul		2019/20	Jun	Jul	MMT	Percent	MMT	Percent
World	48.82	51.66	50.72	50.74	2.85	3.02	3.06	3.05	139.30	156.25	155.26	154.69	-0.57	-0.36	-1.56	-1.00
United States	0.80	0.88	0.97	0.90	4.17	4.18	4.08	4.09	3.34	3.69	3.96	3.70	-0.27	-6.71	0.01	0.14
Total Foreign	48.02	50.77	49.75	49.83	2.83	3.00	3.04	3.03	135.96	152.56	151.30	151.00	-0.30	-0.20	-1.57	-1.03
European Union	12.32	12.37	12.55	12.53	4.54	5.09	5.11	5.07	55.98	62.97	64.10	63.55	-0.55	-0.86	0.58	0.92
Former Soviet Union - 12																
Russia	7.78	8.40	7.80	7.80	2.15	2.37	2.22	2.22	16.74	19.94	17.30	17.30	0.00	0.00	-2.64	-13.24
Ukraine	2.57	2.78	2.75	2.75	2.96	3.42	3.42	3.42	7.60	9.53	9.40	9.40	0.00	0.00	-0.13	-1.34
Kazakhstan	2.52	2.98	2.80	2.80	1.58	1.29	1.57	1.57	3.97	3.83	4.40	4.40	0.00	0.00	0.57	14.88
Belarus	0.43	0.40	0.38	0.38	2.20	3.50	2.76	2.76	0.94	1.40	1.05	1.05	0.00	0.00	-0.35	-25.00
Azerbaijan	0.34	0.32	0.31	0.31	2.72	2.72	2.74	2.74	0.92	0.87	0.85	0.85	0.00	0.00	-0.02	-2.30
Canada	2.40	2.73	2.60	2.70	3.50	3.81	3.73	3.74	8.38	10.38	9.70	10.10	0.40	4.12	-0.28	-2.73
Australia	4.44	4.05	4.30	4.30	1.99	2.22	2.37	2.37	8.82	9.00	10.20	10.20	0.00	0.00	1.20	13.33
Middle East																
Turkey	3.60	3.80	3.80	3.80	1.94	2.08	2.21	2.21	7.00	7.90	8.40	8.40	0.00	0.00	0.50	6.33
Iran	1.55	1.70	1.70	1.70	1.81	2.12	2.21	2.21	2.80	3.60	3.75	3.75	0.00	0.00	0.15	4.17
Iraq	0.60	1.20	1.20	1.20	1.30	1.33	1.29	1.29	0.78	1.60	1.55	1.55	0.00	0.00	-0.05	-3.13
Syria	0.80	1.50	1.50	1.50	0.50	1.33	1.27	1.27	0.40	2.00	1.90	1.90	0.00	0.00	-0.10	-5.00
Africa																
Ethiopia	1.00	1.00	1.00	1.00	2.20	2.30	2.30	2.30	2.20	2.30	2.30	2.30	0.00	0.00	0.00	0.00
Morocco	1.60	1.45	1.10	1.10	1.82	0.80	0.68	0.55	2.91	1.16	0.75	0.60	-0.15	-20.00	-0.56	-48.32
Algeria	1.03	1.03	1.03	1.03	1.90	1.95	1.80	1.80	1.95	2.00	1.85	1.85	0.00	0.00	-0.16	-7.75
Tunisia	0.31	0.47	0.42	0.42	0.99	1.94	1.60	1.60	0.31	0.91	0.66	0.66	0.00	0.00	-0.25	-27.19
South Africa	0.12	0.13	0.13	0.13	3.55	2.61	3.62	3.62	0.42	0.35	0.47	0.47	0.00	0.00	0.13	36.23
South America																
Argentina	1.20	1.00	0.90	0.90	4.22	3.80	4.11	4.11	5.06	3.80	3.70	3.70	0.00	0.00	-0.10	-2.63
Uruguay	0.17	0.16	0.17	0.17	3.87	3.75	3.70	3.70	0.64	0.60	0.61	0.61	0.00	0.00	0.01	1.67
Brazil	0.11	0.12	0.12	0.12	3.16	3.61	3.21	3.21	0.35	0.43	0.39	0.39	0.00	0.00	-0.04	-10.26
India	0.66	0.58	0.62	0.62	2.69	2.84	2.57	2.57	1.78	1.63	1.59	1.59	0.00	0.00	-0.04	-2.57
China	0.26	0.26	0.26	0.26	3.64	3.46	3.46	3.46	0.96	0.90	0.90	0.90	0.00	0.00	0.00	0.00
Mexico	0.35	0.36	0.36	0.36	2.82	2.81	2.80	2.80	1.00	1.01	1.00	1.00	0.00	0.00	-0.01	-0.99
Afghanistan	0.08	0.18	0.17	0.17	0.68	1.39	1.41	1.41	0.06	0.25	0.24	0.24	0.00	0.00	-0.01	-4.00
Others	1.79	1.80	1.80	1.80	2.24	2.33	2.35	2.35	4.00	4.20	4.24	4.24	0.00	0.00	0.04	1.02

World and Selected Countries and Regions

Table 06 Oats Area, Yield, and Production

Country / Region	Area (Million hectares)				Yield (Metric tons per hectare)				Production (Million metric tons)				Change in Production			
	Prel.		2020/21 Proj.		Prel.		2020/21 Proj.		Prel.		2020/21 Proj.		From last month		From last year	
	2018/19	2019/20	Jun	Jul	2018/19	2019/20	Jun	Jul	2018/19	2019/20	Jun	Jul	MMT	Percent	MMT	Percent
World	9.99	9.34	10.18	10.14	2.23	2.40	2.44	2.43	22.24	22.44	24.81	24.67	-0.14	-0.56	2.23	9.93
United States	0.35	0.33	0.45	0.40	2.33	2.31	2.38	2.34	0.82	0.77	1.06	0.94	-0.12	-10.94	0.17	22.44
Total Foreign	9.64	9.00	9.73	9.73	2.22	2.41	2.44	2.44	21.43	21.67	23.75	23.72	-0.02	-0.10	2.06	9.49
European Union	2.73	2.53	2.60	2.60	2.86	3.09	3.12	3.10	7.79	7.81	8.10	8.08	-0.02	-0.28	0.27	3.41
Former Soviet Union - 12																
Russia	2.73	2.43	2.70	2.70	1.73	1.82	1.85	1.85	4.72	4.42	5.00	5.00	0.00	0.00	0.58	13.12
Ukraine	0.20	0.18	0.18	0.18	2.14	2.32	2.50	2.50	0.42	0.43	0.45	0.45	0.00	0.00	0.02	5.39
Belarus	0.15	0.15	0.15	0.15	2.26	3.00	2.47	2.47	0.34	0.45	0.37	0.37	0.00	0.00	-0.08	-17.78
Kazakhstan	0.24	0.24	0.23	0.23	1.43	1.10	1.33	1.33	0.34	0.27	0.30	0.30	0.00	0.00	0.03	12.36
Canada	1.01	1.16	1.26	1.26	3.42	3.58	3.49	3.49	3.44	4.16	4.40	4.40	0.00	0.00	0.24	5.85
South America																
Argentina	0.24	0.14	0.20	0.20	2.40	2.31	2.50	2.50	0.57	0.33	0.50	0.50	0.00	0.00	0.17	51.52
Brazil	0.38	0.40	0.40	0.40	2.11	2.21	2.28	2.28	0.80	0.88	0.91	0.91	0.00	0.00	0.03	3.53
Chile	0.08	0.08	0.08	0.08	5.13	5.50	5.61	5.61	0.39	0.44	0.46	0.46	0.00	0.00	0.02	4.55
Uruguay	0.03	0.01	0.02	0.02	2.04	1.86	2.00	2.00	0.05	0.03	0.04	0.04	0.00	0.00	0.01	53.85
Oceania																
Australia	0.94	0.70	0.95	0.95	1.21	1.23	1.68	1.68	1.14	0.86	1.60	1.60	0.00	0.00	0.74	86.05
New Zealand	0.01	0.01	0.01	0.01	5.00	5.50	5.50	5.50	0.03	0.03	0.03	0.03	0.00	0.00	0.00	0.00
China	0.50	0.53	0.53	0.53	1.15	1.19	1.19	1.19	0.58	0.63	0.63	0.63	0.00	0.00	0.00	0.00
Africa																
Algeria	0.09	0.09	0.09	0.09	1.29	1.29	1.29	1.29	0.11	0.11	0.11	0.11	0.00	0.00	0.00	0.00
Morocco	0.05	0.05	0.04	0.04	1.40	0.89	0.88	0.88	0.06	0.04	0.04	0.04	0.00	0.00	-0.01	-12.50
South Africa	0.02	0.02	0.02	0.02	1.65	0.76	1.50	1.50	0.03	0.02	0.03	0.03	0.00	0.00	0.01	87.50
Other Europe																
Norway	0.07	0.07	0.07	0.07	2.09	4.29	4.29	4.29	0.14	0.30	0.30	0.30	0.00	0.00	0.00	0.00
Serbia	0.03	0.03	0.03	0.03	2.17	2.17	2.17	2.17	0.07	0.07	0.07	0.07	0.00	0.00	0.00	0.00
Albania	0.01	0.01	0.01	0.01	2.08	2.14	2.14	2.14	0.03	0.03	0.03	0.03	0.00	0.00	0.00	0.00
Bosnia and Herzegovina	0.01	0.01	0.01	0.01	2.79	1.93	2.56	2.56	0.04	0.03	0.02	0.02	0.00	0.00	0.00	-14.81
Turkey	0.10	0.10	0.10	0.10	2.30	2.30	2.40	2.40	0.23	0.23	0.24	0.24	0.00	0.00	0.01	4.35
Mexico	0.05	0.05	0.05	0.05	2.06	1.98	2.00	2.00	0.10	0.10	0.10	0.10	0.00	0.00	0.00	1.01
Others	0.02	0.01	0.01	0.01	2.00	1.86	1.86	1.86	0.03	0.03	0.03	0.03	0.00	0.00	0.00	0.00

World and Selected Countries and Regions

Table 07 Rye Area, Yield, and Production

Country / Region	Area (Million hectares)				Yield (Metric tons per hectare)				Production (Million metric tons)				Change in Production			
	Prel.		2020/21 Proj.		Prel.		2020/21 Proj.		Prel.		2020/21 Proj.		From last month		From last year	
	2018/19	2019/20	Jun	Jul	2018/19	2019/20	Jun	Jul	2018/19	2019/20	Jun	Jul	MMT	Percent	MMT	Percent
World	3.74	3.85	4.09	4.16	2.68	3.13	3.12	3.14	10.01	12.06	12.78	13.07	0.29	2.30	1.01	8.41
United States	0.11	0.13	0.14	0.16	1.95	2.16	1.90	1.91	0.21	0.27	0.27	0.30	0.03	12.59	0.03	12.59
Total Foreign	3.63	3.73	3.95	4.00	2.70	3.16	3.17	3.19	9.80	11.79	12.51	12.77	0.26	2.08	0.98	8.31
European Union	1.92	2.20	2.20	2.20	3.24	3.83	3.89	3.93	6.22	8.44	8.55	8.65	0.10	1.17	0.21	2.49
Former Soviet Union - 12																
Russia	0.96	0.82	1.00	1.00	2.00	1.73	2.00	2.00	1.91	1.42	2.00	2.00	0.00	0.00	0.58	40.45
Belarus	0.25	0.20	0.20	0.20	2.00	3.25	2.75	2.75	0.50	0.65	0.55	0.55	0.00	0.00	-0.10	-15.38
Ukraine	0.15	0.12	0.15	0.15	2.66	2.90	3.00	3.00	0.40	0.34	0.45	0.45	0.00	0.00	0.11	32.74
Kazakhstan	0.02	0.02	0.03	0.03	1.05	1.00	1.12	1.12	0.02	0.02	0.03	0.03	0.00	0.00	0.01	21.74
Turkey	0.11	0.11	0.11	0.11	2.91	2.91	2.91	2.91	0.32	0.32	0.32	0.32	0.00	0.00	0.00	0.00
Canada	0.08	0.10	0.12	0.17	2.99	3.23	3.08	3.12	0.24	0.33	0.37	0.53	0.16	43.24	0.20	59.16
South America																
Chile	0.00	0.00	0.00	0.00	5.00	5.00	5.00	5.00	0.01	0.01	0.01	0.01	0.00	0.00	0.00	0.00
Argentina	0.05	0.06	0.05	0.05	1.78	2.14	2.00	2.00	0.09	0.12	0.10	0.10	0.00	0.00	-0.02	-16.67
Other Europe																
Bosnia and Herzegovina	0.00	0.00	0.00	0.00	2.75	2.50	3.33	3.33	0.01	0.01	0.01	0.01	0.00	0.00	0.00	0.00
Switzerland	0.00	0.00	0.00	0.00	5.50	5.50	5.50	5.50	0.01	0.01	0.01	0.01	0.00	0.00	0.00	0.00
Serbia	0.00	0.00	0.00	0.00	2.50	2.50	2.50	2.50	0.01	0.01	0.01	0.01	0.00	0.00	0.00	0.00
Australia	0.04	0.04	0.04	0.04	0.68	0.68	0.68	0.68	0.03	0.03	0.03	0.03	0.00	0.00	0.00	0.00
Others	0.03	0.04	0.04	0.04	1.00	1.92	1.90	1.90	0.03	0.07	0.07	0.07	0.00	0.00	0.00	1.37

World and Selected Countries and Regions

Table 08 Sorghum Area, Yield, and Production

Country / Region	Area (Million hectares)				Yield (Metric tons per hectare)				Production (Million metric tons)				Change in Production			
	Prel.		2020/21 Proj.		Prel.		2020/21 Proj.		Prel.		2020/21 Proj.		From last month		From last year	
	2018/19	2019/20	Jun	Jul	2018/19	2019/20	Jun	Jul	2018/19	2019/20	Jun	Jul	MMT	Percent	MMT	Percent
World	40.77	40.28	40.98	40.93	1.47	1.43	1.46	1.45	59.79	57.72	59.77	59.26	-0.51	-0.85	1.54	2.67
United States	2.05	1.89	2.10	1.96	4.53	4.58	4.24	4.24	9.27	8.67	8.92	8.31	-0.61	-6.84	-0.37	-4.23
Total Foreign	38.72	38.39	38.88	38.97	1.30	1.28	1.31	1.31	50.52	49.05	50.85	50.95	0.10	0.20	1.91	3.89
Africa																
Nigeria	5.80	5.90	5.90	5.90	1.16	1.13	1.17	1.17	6.72	6.67	6.90	6.90	0.00	0.00	0.24	3.53
Ethiopia	1.83	1.85	1.85	1.85	2.70	2.81	2.81	2.81	4.93	5.20	5.20	5.20	0.00	0.00	0.00	0.00
Sudan	7.11	7.00	7.00	7.00	0.70	0.57	0.71	0.71	4.95	4.00	5.00	5.00	0.00	0.00	1.00	25.00
Burkina	1.91	1.80	1.80	1.80	1.01	1.00	1.00	1.00	1.93	1.80	1.80	1.80	0.00	0.00	0.00	0.00
Mali	1.35	1.50	1.50	1.50	1.09	1.00	1.00	1.00	1.47	1.50	1.50	1.50	0.00	0.00	0.00	0.00
Niger	3.90	3.70	3.70	3.70	0.54	0.53	0.51	0.51	2.10	1.97	1.90	1.90	0.00	0.00	-0.07	-3.55
Cameroon	0.87	0.85	0.85	0.85	1.63	1.41	1.41	1.41	1.42	1.20	1.20	1.20	0.00	0.00	0.00	0.00
Tanzania	0.79	0.80	0.80	0.80	1.02	1.00	1.00	1.00	0.81	0.80	0.80	0.80	0.00	0.00	0.00	0.00
Egypt	0.14	0.14	0.14	0.14	5.36	5.36	5.36	5.36	0.75	0.75	0.75	0.75	0.00	0.00	0.00	0.00
Uganda	0.45	0.41	0.41	0.41	0.67	0.98	0.98	0.98	0.30	0.40	0.40	0.40	0.00	0.00	0.00	0.00
Ghana	0.28	0.25	0.25	0.25	1.12	1.12	1.12	1.12	0.32	0.28	0.28	0.28	0.00	0.00	0.00	0.00
Mozambique	0.25	0.30	0.30	0.30	1.18	1.08	0.67	0.67	0.30	0.33	0.20	0.20	0.00	0.00	-0.13	-38.46
South Africa	0.05	0.05	0.05	0.05	2.70	2.96	2.50	2.50	0.14	0.13	0.13	0.13	0.00	0.00	-0.01	-6.02
Mexico	1.35	1.32	1.35	1.35	3.48	3.26	3.33	3.33	4.70	4.30	4.50	4.50	0.00	0.00	0.20	4.65
South America																
Argentina	0.63	0.58	0.55	0.55	3.97	4.35	4.36	4.36	2.50	2.50	2.40	2.40	0.00	0.00	-0.10	-4.00
Brazil	0.73	0.75	0.75	0.75	2.97	3.03	2.80	2.80	2.18	2.25	2.10	2.10	0.00	0.00	-0.15	-6.83
South Asia																
India	4.09	4.66	4.80	4.80	0.85	1.00	0.92	0.92	3.48	4.63	4.40	4.40	0.00	0.00	-0.23	-5.03
Pakistan	0.24	0.24	0.25	0.25	0.59	0.58	0.58	0.58	0.14	0.14	0.15	0.15	0.00	0.00	0.01	3.57
China	0.72	0.75	0.73	0.73	4.79	4.80	4.86	4.86	3.45	3.60	3.55	3.55	0.00	0.00	-0.05	-1.39
Australia	0.55	0.15	0.50	0.50	2.11	2.00	2.80	2.80	1.16	0.30	1.40	1.40	0.00	0.00	1.10	366.67
European Union	0.13	0.16	0.17	0.17	5.70	5.34	5.53	5.53	0.75	0.88	0.94	0.94	0.00	0.00	0.06	7.31
Others	5.56	5.24	5.23	5.32	1.09	1.03	1.03	1.03	6.04	5.42	5.36	5.46	0.10	1.86	0.04	0.81

World and Selected Countries and Regions

Table 09 Rice Area, Yield, and Production
World and Selected Countries and Regions

Country / Region	Area (Million hectares)				Yield (Metric tons per hectare)				Production (Million metric tons)				Change in Production			
	Prel.		2020/21 Proj.		Prel.		2020/21 Proj.		Prel.		2020/21 Proj.		From last month		From last year	
	2018/19	2019/20	Jun	Jul	2018/19	2019/20	Jun	Jul	2018/19	2019/20	Jun	Jul	MMT	Percent	MMT	Percent
World	162.48	160.57	162.93	163.00	4.56	4.60	4.60	4.60	496.63	495.23	502.09	502.63	0.54	0.11	7.40	1.49
United States	1.18	1.00	1.14	1.16	8.62	8.38	8.63	8.62	7.11	5.86	6.86	7.01	0.14	2.08	1.14	19.49
Total Foreign	161.30	159.57	161.80	161.83	4.53	4.58	4.57	4.57	489.53	489.36	495.22	495.62	0.40	0.08	6.26	1.28
East Asia																
China	30.19	29.69	30.20	30.20	7.03	7.06	7.05	7.05	148.49	146.73	149.00	149.00	0.00	0.00	2.27	1.55
Japan	1.55	1.54	1.54	1.54	6.79	6.78	6.82	6.82	7.66	7.61	7.65	7.65	0.00	0.00	0.04	0.51
Korea, South	0.74	0.73	0.73	0.73	6.99	6.84	6.84	7.06	3.87	3.74	3.74	3.86	0.11	3.02	0.11	3.02
Korea, North	0.50	0.50	0.50	0.50	4.18	4.18	4.18	4.18	1.36	1.36	1.36	1.36	0.00	0.00	0.00	0.00
South Asia																
India	44.16	43.60	44.00	44.00	3.96	4.06	4.02	4.02	116.48	117.94	118.00	118.00	0.00	0.00	0.06	0.05
Bangladesh	11.77	11.83	11.90	11.90	4.45	4.55	4.54	4.54	34.91	35.85	36.00	36.00	0.00	0.00	0.15	0.42
Pakistan	2.88	3.00	3.00	3.00	3.80	3.60	3.75	3.75	7.30	7.20	7.50	7.50	0.00	0.00	0.30	4.17
Nepal	1.49	1.48	1.49	1.49	3.75	3.67	3.70	3.70	3.73	3.62	3.68	3.68	0.00	0.00	0.06	1.60
Sri Lanka	0.98	0.95	0.98	0.98	4.72	4.85	4.30	4.52	3.13	3.13	2.89	3.04	0.15	5.01	-0.09	-2.94
Southeast Asia																
Indonesia	11.50	11.30	11.50	11.50	4.68	4.67	4.78	4.78	34.20	33.50	34.90	34.90	0.00	0.00	1.40	4.18
Vietnam	7.54	7.51	7.50	7.50	5.80	5.83	5.80	5.80	27.34	27.37	27.20	27.20	0.00	0.00	-0.17	-0.62
Thailand	10.83	9.96	10.90	10.90	2.85	2.74	2.84	2.84	20.34	18.00	20.40	20.40	0.00	0.00	2.40	13.33
Burma	7.08	6.90	7.10	7.10	2.91	2.88	2.88	2.88	13.20	12.70	13.10	13.10	0.00	0.00	0.40	3.15
Philippines	4.74	4.65	4.45	4.45	3.93	3.99	3.92	3.92	11.73	11.70	11.00	11.00	0.00	0.00	-0.70	-5.98
Cambodia	3.24	3.26	3.28	3.28	2.91	2.89	2.89	2.89	5.74	5.74	5.78	5.78	0.00	0.00	0.04	0.70
Laos	0.86	0.97	0.98	0.98	3.12	3.19	3.24	3.24	1.68	1.95	2.00	2.00	0.00	0.00	0.05	2.56
Malaysia	0.70	0.70	0.70	0.70	4.01	4.01	4.01	4.01	1.83	1.83	1.83	1.83	0.00	0.00	0.00	0.00
South America																
Brazil	1.70	1.66	1.60	1.60	6.18	6.70	6.63	6.63	7.14	7.56	7.21	7.21	0.00	0.00	-0.35	-4.67
Peru	0.44	0.43	0.44	0.44	7.99	7.53	7.59	7.59	2.42	2.21	2.28	2.28	0.00	0.00	0.07	3.13
Africa																
Egypt	0.46	0.76	0.76	0.76	8.78	8.20	8.20	8.20	2.80	4.30	4.30	4.30	0.00	0.00	0.00	0.00
Madagascar	1.50	1.50	1.50	1.50	2.69	2.80	2.80	2.80	2.58	2.69	2.69	2.69	0.00	0.00	0.00	0.00
Nigeria	3.35	3.50	3.50	3.50	2.15	2.29	2.29	2.29	4.54	5.04	5.04	5.04	0.00	0.00	0.00	0.00
European Union	0.41	0.42	0.42	0.42	6.86	6.81	6.76	6.76	1.97	1.97	1.97	1.97	0.00	0.00	0.00	0.00
Iran	0.58	0.58	0.58	0.58	5.25	5.25	5.27	5.27	1.99	1.99	2.00	2.00	0.00	0.00	0.01	0.35
Others	12.12	12.17	12.26	12.30	2.89	2.95	2.93	2.94	23.11	23.64	23.71	23.85	0.14	0.59	0.22	0.92

Yield is on a rough basis, before the milling process. Production is on a milled basis, after the milling process.

Table 10 Total Oilseed Area, Yield, and Production

World and Selected Countries and Regions

Country / Region	Area (Million hectares)				Yield (Metric tons per hectare)				Production (Million metric tons)				Change in Production			
	Prel.		2020/21 Proj.		Prel.		2020/21 Proj.		Prel.		2020/21 Proj.		From last month		From last year	
	2018/19	2019/20	Jun	Jul	2018/19	2019/20	Jun	Jul	2018/19	2019/20	Jun	Jul	MMT	Percent	MMT	Percent
World Total	--	--	--	--	--	--	--	--	600.27	577.15	606.15	604.20	-1.95	-0.32	27.05	4.69
Total Foreign	--	--	--	--	--	--	--	--	469.55	470.15	482.95	481.35	-1.60	-0.33	11.20	2.38
Oilseed, Copra	--	--	--	--	--	--	--	--	5.98	5.86	5.77	5.77	0.00	0.00	-0.09	-1.59
Oilseed, Palm Kernel	--	--	--	--	--	--	--	--	20.17	19.85	20.28	20.28	0.00	0.00	0.44	2.19
Major Oilseeds	248.59	245.20	249.76	248.75	2.31	2.25	2.32	2.32	574.12	551.44	580.11	578.15	-1.95	-0.34	26.71	4.84
United States	41.33	36.88	40.08	39.68	3.16	2.90	3.07	3.10	130.72	107.00	123.20	122.85	-0.35	-0.29	15.85	14.81
Foreign Oilseeds	207.26	208.33	209.68	209.07	2.14	2.13	2.18	2.18	443.41	444.44	456.90	455.30	-1.60	-0.35	10.86	2.44
South America	63.36	64.51	66.50	66.43	3.16	3.12	3.17	3.18	200.17	201.58	211.10	210.93	-0.17	-0.08	9.35	4.64
Brazil	37.75	38.78	40.06	40.06	3.28	3.38	3.38	3.38	123.79	131.01	135.54	135.54	0.00	0.00	4.54	3.46
Argentina	19.16	19.40	19.96	19.94	3.18	2.84	2.97	2.98	61.00	55.15	59.31	59.34	0.03	0.05	4.19	7.60
Paraguay	3.77	3.61	3.73	3.73	2.37	2.77	2.78	2.78	8.94	10.01	10.38	10.38	0.00	0.00	0.37	3.68
Bolivia	1.51	1.51	1.55	1.54	2.07	1.93	1.93	1.97	3.13	2.92	2.99	3.03	0.05	1.54	0.11	3.73
Uruguay	1.02	1.06	1.05	1.01	2.86	1.98	2.35	2.20	2.92	2.10	2.46	2.21	-0.25	-10.16	0.11	5.24
China	24.01	25.20	25.10	25.10	2.50	2.49	2.47	2.47	59.95	62.63	61.90	61.90	0.00	0.00	-0.73	-1.16
South Asia	39.29	41.19	39.41	39.61	0.99	0.98	1.01	1.01	39.03	40.22	39.83	39.91	0.09	0.22	-0.30	-0.75
India	36.12	37.74	36.15	36.15	0.96	0.97	0.99	0.99	34.78	36.43	35.94	35.94	0.00	0.00	-0.50	-1.36
Pakistan	2.80	3.09	2.90	3.10	1.36	1.08	1.19	1.14	3.81	3.33	3.44	3.53	0.09	2.53	0.19	5.82
European Union	12.24	11.11	10.92	10.91	2.68	2.67	2.71	2.71	32.78	29.71	29.62	29.62	0.00	-0.01	-0.09	-0.31
Former Soviet Union - 12	25.62	25.90	26.24	26.24	1.80	1.96	1.98	1.98	46.11	50.68	52.01	52.01	0.00	0.00	1.33	2.62
Russia	12.18	12.56	12.90	12.90	1.54	1.73	1.73	1.73	18.73	21.70	22.30	22.30	0.00	0.00	0.60	2.75
Ukraine	9.38	9.51	9.45	9.45	2.42	2.53	2.60	2.60	22.68	24.01	24.60	24.60	0.00	0.00	0.59	2.44
Uzbekistan	1.10	1.01	0.98	0.98	1.17	1.36	1.31	1.31	1.28	1.37	1.27	1.27	0.00	0.00	-0.10	-7.35
Canada	11.69	10.63	10.91	10.37	2.37	2.36	2.40	2.40	27.67	25.06	26.14	24.86	-1.28	-4.90	-0.20	-0.81
Africa	22.12	21.69	21.80	21.66	1.03	0.96	0.97	0.97	22.81	20.84	21.12	21.03	-0.10	-0.46	0.19	0.91
Nigeria	3.79	3.78	3.79	3.79	1.37	1.14	1.24	1.24	5.19	4.30	4.70	4.70	0.00	0.00	0.40	9.30
South Africa	1.31	1.27	1.32	1.31	1.51	1.69	1.60	1.59	1.97	2.15	2.11	2.09	-0.02	-1.04	-0.06	-2.93
Tanzania	1.42	1.60	1.58	1.45	0.89	0.85	0.85	0.87	1.26	1.36	1.34	1.26	-0.08	-5.68	-0.10	-7.06
Southeast Asia	3.32	3.13	3.21	3.21	1.39	1.38	1.39	1.39	4.60	4.31	4.47	4.47	0.00	0.00	0.16	3.71
Indonesia	0.99	0.95	0.94	0.94	1.56	1.55	1.54	1.54	1.55	1.47	1.45	1.45	0.00	0.00	-0.03	-1.70
Burma	2.01	1.87	1.97	1.97	1.20	1.18	1.21	1.21	2.41	2.21	2.38	2.38	0.00	0.00	0.17	7.79
Australia	2.56	1.91	2.64	2.64	1.22	1.36	1.48	1.48	3.11	2.60	3.90	3.90	0.00	0.00	1.30	50.15
Turkey	1.33	1.39	1.25	1.20	2.53	2.31	2.50	2.52	3.36	3.22	3.12	3.02	-0.10	-3.14	-0.20	-6.21
Others	1.73	1.66	1.70	1.69	2.21	2.17	2.17	2.16	3.81	3.60	3.69	3.65	-0.04	-0.95	0.06	1.61

World Total and Total Foreign: (Major Oilseeds plus copra and palm kernel) Major Oilseeds: (soybeans, sunflowerseeds, peanuts(inshell), cottonseed and rapeseed)

Table 11 Soybean Area, Yield, and Production

Country / Region	Area (Million hectares)				Yield (Metric tons per hectare)				Production (Million metric tons)				Change in Production			
	Prel.		2020/21 Proj.		Prel.		2020/21 Proj.		Prel.		2020/21 Proj.		From last month		From last year	
	2018/19	2019/20	Jun	Jul	2018/19	2019/20	Jun	Jul	2018/19	2019/20	Jun	Jul	MMT	Percent	MMT	Percent
World	125.33	122.68	126.98	126.90	2.88	2.75	2.86	2.86	360.55	337.14	362.85	362.52	-0.33	-0.09	25.38	7.53
United States	35.45	30.33	33.51	33.60	3.40	3.19	3.35	3.35	120.52	96.68	112.26	112.54	0.27	0.24	15.86	16.41
Total Foreign	89.88	92.35	93.47	93.30	2.67	2.60	2.68	2.68	240.03	240.46	250.58	249.98	-0.60	-0.24	9.52	3.96
South America																
Brazil	35.90	36.90	38.30	38.30	3.31	3.41	3.42	3.42	119.00	126.00	131.00	131.00	0.00	0.00	5.00	3.97
Argentina	16.60	17.00	17.30	17.30	3.33	2.94	3.09	3.09	55.30	50.00	53.50	53.50	0.00	0.00	3.50	7.00
Paraguay	3.70	3.54	3.65	3.65	2.39	2.80	2.81	2.81	8.85	9.90	10.25	10.25	0.00	0.00	0.35	3.54
Bolivia	1.40	1.40	1.43	1.43	2.14	2.00	2.03	2.03	2.99	2.80	2.90	2.90	0.00	0.00	0.10	3.57
Uruguay	0.97	1.00	0.98	0.94	2.93	2.00	2.40	2.23	2.83	2.00	2.35	2.10	-0.25	-10.64	0.10	5.00
East Asia																
China	8.41	9.30	9.30	9.30	1.90	1.95	1.88	1.88	15.97	18.10	17.50	17.50	0.00	0.00	-0.60	-3.31
Korea, South	0.05	0.06	0.06	0.06	1.75	1.81	1.80	1.80	0.09	0.11	0.11	0.11	0.00	0.00	0.00	2.86
Korea, North	0.15	0.15	0.15	0.15	1.50	1.50	1.50	1.50	0.23	0.23	0.23	0.23	0.00	0.00	0.00	0.00
Japan	0.15	0.14	0.14	0.14	1.45	1.47	1.65	1.65	0.21	0.21	0.24	0.24	0.00	0.00	0.02	10.85
India	11.33	12.00	11.40	11.40	0.96	0.78	0.92	0.92	10.93	9.30	10.50	10.50	0.00	0.00	1.20	12.90
Canada	2.54	2.30	2.17	2.04	2.86	2.61	2.83	2.84	7.27	6.00	6.15	5.80	-0.35	-5.69	-0.20	-3.33
Former Soviet Union - 12																
Russia	2.74	2.78	3.00	3.00	1.47	1.57	1.57	1.57	4.03	4.36	4.70	4.70	0.00	0.00	0.34	7.82
Ukraine	1.88	1.77	1.50	1.50	2.58	2.29	2.40	2.40	4.83	4.05	3.60	3.60	0.00	0.00	-0.45	-11.09
European Union	0.92	0.92	0.92	0.92	2.91	2.87	2.83	2.83	2.66	2.63	2.60	2.60	0.00	0.00	-0.03	-1.22
Southeast Asia																
Indonesia	0.42	0.40	0.39	0.39	1.24	1.20	1.22	1.22	0.52	0.48	0.48	0.48	0.00	0.00	-0.01	-1.04
Vietnam	0.05	0.05	0.05	0.05	1.62	1.53	1.53	1.53	0.08	0.07	0.07	0.07	0.00	0.00	0.00	0.00
Thailand	0.04	0.03	0.03	0.03	1.57	1.53	1.63	1.63	0.06	0.05	0.05	0.05	0.00	0.00	0.00	0.00
Burma	0.14	0.14	0.14	0.14	1.04	1.04	1.04	1.04	0.15	0.15	0.14	0.14	0.00	0.00	-0.01	-3.45
Serbia	0.22	0.22	0.22	0.22	2.84	2.73	2.73	2.73	0.63	0.60	0.60	0.60	0.00	0.00	0.00	0.00
Mexico	0.19	0.15	0.23	0.23	1.75	1.57	1.74	1.74	0.34	0.24	0.39	0.39	0.00	0.00	0.16	66.38
Africa																
South Africa	0.73	0.71	0.72	0.72	1.60	1.79	1.81	1.81	1.17	1.26	1.30	1.30	0.00	0.00	0.04	3.17
Nigeria	0.70	0.71	0.72	0.72	0.96	0.99	0.97	0.97	0.67	0.70	0.70	0.70	0.00	0.00	0.00	0.00
Zambia	0.19	0.20	0.19	0.19	1.58	1.43	1.50	1.50	0.30	0.28	0.29	0.29	0.00	0.00	0.00	1.42
Uganda	0.05	0.05	0.05	0.05	0.60	0.60	0.60	0.60	0.03	0.03	0.03	0.03	0.00	0.00	0.00	0.00
Middle East																
Iran	0.07	0.07	0.07	0.07	2.29	2.43	2.41	2.41	0.16	0.17	0.17	0.17	0.00	0.00	0.00	-0.59
Turkey	0.03	0.03	0.03	0.03	3.80	3.89	3.79	3.79	0.10	0.11	0.11	0.11	0.00	0.00	0.01	4.76
Others	0.33	0.34	0.34	0.34	2.01	1.90	1.89	1.89	0.66	0.65	0.64	0.64	0.00	0.00	-0.01	-1.08

World and Selected Countries and Regions

Table 12 Cottonseed Area, Yield, and Production

Country / Region	Area (Million hectares)				Yield (Metric tons per hectare)				Production (Million metric tons)				Change in Production			
	Prel.		2020/21 Proj.		Prel.		2020/21 Proj.		Prel.		2020/21 Proj.		From last month		From last year	
	2018/19	2019/20	Jun	Jul	2018/19	2019/20	Jun	Jul	2018/19	2019/20	Jun	Jul	MMT	Percent	MMT	Percent
World	32.70	34.33	32.78	32.31	1.32	1.31	1.33	1.33	43.28	44.95	43.63	42.91	-0.72	-1.65	-2.04	-4.54
United States	4.04	4.70	4.59	4.15	1.26	1.15	1.23	1.23	5.11	5.39	5.67	5.11	-0.55	-9.76	-0.28	-5.21
Total Foreign	28.66	29.63	28.19	28.16	1.33	1.34	1.35	1.34	38.18	39.56	37.96	37.80	-0.17	-0.44	-1.76	-4.45
South Asia																
India	12.60	13.30	12.50	12.50	0.87	0.97	0.97	0.97	10.95	12.95	12.10	12.10	0.00	0.00	-0.85	-6.56
Pakistan	2.30	2.45	2.20	2.40	1.43	1.10	1.24	1.17	3.29	2.69	2.73	2.82	0.09	3.19	0.13	4.84
China	3.50	3.45	3.30	3.30	3.11	3.10	3.15	3.15	10.88	10.68	10.40	10.40	0.00	0.00	-0.28	-2.61
Former Soviet Union - 12																
Uzbekistan	1.10	1.01	0.98	0.98	1.17	1.36	1.31	1.31	1.28	1.37	1.27	1.27	0.00	0.00	-0.10	-7.35
Turkmenistan	0.55	0.55	0.60	0.60	0.65	0.66	0.66	0.66	0.36	0.36	0.40	0.40	0.00	0.00	0.04	9.72
Tajikistan	0.18	0.18	0.16	0.16	0.90	1.27	1.22	1.22	0.16	0.23	0.20	0.20	0.00	0.00	-0.03	-14.85
Kazakhstan	0.13	0.13	0.11	0.11	1.05	1.16	1.12	1.12	0.14	0.15	0.12	0.12	0.00	0.00	-0.02	-15.17
South America																
Brazil	1.64	1.67	1.55	1.55	2.59	2.62	2.53	2.53	4.25	4.38	3.93	3.93	0.00	0.00	-0.46	-10.38
Argentina	0.34	0.46	0.45	0.43	1.24	1.14	1.11	1.13	0.41	0.52	0.50	0.48	-0.02	-3.61	-0.04	-7.14
Middle East																
Turkey	0.52	0.57	0.45	0.40	2.35	1.98	2.39	2.45	1.22	1.13	1.08	0.98	-0.10	-9.10	-0.15	-13.06
Syria	0.03	0.03	0.03	0.03	2.36	2.36	2.36	2.36	0.06	0.06	0.06	0.06	0.00	0.00	0.00	0.00
Iran	0.08	0.08	0.08	0.08	1.16	1.16	1.16	1.16	0.09	0.09	0.09	0.09	0.00	0.00	0.00	0.00
Australia	0.38	0.06	0.18	0.18	1.74	3.12	2.83	2.83	0.66	0.19	0.51	0.51	0.00	0.00	0.32	172.73
European Union	0.31	0.35	0.35	0.34	1.75	1.81	1.80	1.81	0.55	0.64	0.62	0.62	0.00	-0.64	-0.02	-3.13
Africa																
Burkina	0.63	0.58	0.58	0.58	0.37	0.48	0.46	0.46	0.24	0.28	0.26	0.26	0.00	0.00	-0.01	-5.07
Mali	0.73	0.74	0.74	0.74	0.50	0.52	0.52	0.52	0.36	0.38	0.38	0.38	0.00	0.00	0.00	0.00
Cameroon	0.25	0.25	0.25	0.25	1.20	1.29	1.28	1.28	0.30	0.32	0.32	0.32	0.00	0.00	0.00	-0.62
Cote d'Ivoire	0.39	0.41	0.41	0.41	0.64	0.66	0.69	0.69	0.25	0.27	0.28	0.28	0.00	0.00	0.01	4.85
Benin	0.65	0.68	0.68	0.68	0.71	0.71	0.71	0.71	0.46	0.48	0.48	0.48	0.00	0.00	0.00	0.00
Tanzania	0.42	0.60	0.58	0.45	0.39	0.43	0.41	0.36	0.16	0.26	0.24	0.16	-0.08	-31.80	-0.10	-37.07
Egypt	0.14	0.10	0.07	0.07	1.06	0.92	1.00	1.00	0.15	0.09	0.07	0.07	0.00	0.00	-0.03	-29.35
Nigeria	0.27	0.27	0.27	0.27	0.38	0.38	0.38	0.38	0.10	0.10	0.10	0.10	0.00	0.00	0.00	0.00
Uganda	0.08	0.09	0.10	0.10	1.74	1.67	1.40	1.40	0.14	0.15	0.14	0.14	0.00	0.00	-0.01	-6.04
Zimbabwe	0.20	0.20	0.21	0.21	0.38	0.36	0.36	0.36	0.08	0.07	0.08	0.08	0.00	0.00	0.00	5.56
Sudan	0.18	0.20	0.20	0.20	1.42	1.53	1.41	1.41	0.26	0.31	0.28	0.28	0.00	0.00	-0.02	-7.84
Mexico	0.24	0.23	0.17	0.16	2.44	2.37	2.38	2.24	0.59	0.53	0.39	0.36	-0.04	-8.91	-0.18	-32.83
Burma	0.24	0.25	0.24	0.24	1.21	1.22	1.25	1.25	0.29	0.30	0.30	0.30	0.00	0.00	0.00	0.67
Others	0.59	0.78	0.79	0.78	0.84	0.76	0.81	0.79	0.49	0.59	0.64	0.62	-0.02	-3.44	0.02	4.05

World and Selected Countries and Regions

Table 13 Peanut Area, Yield, and Production

Country / Region	Area (Million hectares)				Yield (Metric tons per hectare)				Production (Million metric tons)				Change in Production			
	Prel.		2020/21 Proj.		Prel.		2020/21 Proj.		Prel.		2020/21 Proj.		From last month		From last year	
	2018/19	2019/20	Jun	Jul	2018/19	2019/20	Jun	Jul	2018/19	2019/20	Jun	Jul	MMT	Percent	MMT	Percent
World	27.96	27.09	27.32	27.32	1.68	1.70	1.69	1.69	47.09	46.11	46.06	46.12	0.06	0.13	0.01	0.02
United States	0.56	0.56	0.59	0.60	4.48	4.43	4.48	4.48	2.49	2.49	2.66	2.67	0.01	0.34	0.18	7.18
Total Foreign	27.40	26.53	26.73	26.73	1.63	1.64	1.62	1.63	44.60	43.62	43.40	43.45	0.05	0.12	-0.17	-0.39
China	4.62	4.60	4.60	4.60	3.75	3.80	3.80	3.80	17.33	17.50	17.50	17.50	0.00	0.00	0.00	0.00
Africa																
Nigeria	2.82	2.80	2.80	2.80	1.57	1.25	1.39	1.39	4.42	3.50	3.90	3.90	0.00	0.00	0.40	11.43
Sudan	3.07	2.30	2.30	2.30	0.94	0.78	0.78	0.78	2.88	1.80	1.80	1.80	0.00	0.00	0.00	0.00
Senegal	1.13	1.11	1.20	1.20	1.32	1.28	1.08	1.08	1.50	1.42	1.30	1.30	0.00	0.00	-0.12	-8.45
Cameroon	0.43	0.43	0.43	0.43	1.40	1.40	1.40	1.40	0.60	0.60	0.60	0.60	0.00	0.00	0.00	0.00
Ghana	0.79	0.75	0.75	0.75	0.98	0.87	0.87	0.87	0.77	0.65	0.65	0.65	0.00	0.00	0.00	0.00
Chad	0.79	0.77	0.77	0.77	1.14	1.10	1.10	1.10	0.89	0.85	0.85	0.85	0.00	0.00	0.00	0.00
Malawi	0.41	0.40	0.40	0.40	0.85	0.88	0.88	0.88	0.35	0.35	0.35	0.35	0.00	0.00	0.00	0.00
Congo (Kinshasa)	0.50	0.50	0.50	0.50	0.85	0.85	0.85	0.85	0.42	0.42	0.42	0.42	0.00	0.00	0.00	0.00
Niger	0.93	0.90	0.92	0.92	0.64	0.56	0.65	0.65	0.59	0.50	0.59	0.59	0.00	0.00	0.09	18.80
Mali	0.38	0.43	0.43	0.43	1.31	1.00	1.00	1.00	0.49	0.43	0.43	0.43	0.00	0.00	0.00	0.00
Uganda	0.43	0.43	0.43	0.43	0.71	0.71	0.71	0.71	0.30	0.30	0.30	0.30	0.00	0.00	0.00	0.00
Burkina	0.39	0.56	0.56	0.56	0.84	0.80	0.80	0.80	0.33	0.45	0.45	0.45	0.00	0.00	0.00	0.00
Guinea	0.79	0.75	0.75	0.75	0.98	1.00	1.00	1.00	0.77	0.75	0.75	0.75	0.00	0.00	0.00	0.00
Egypt	0.06	0.06	0.06	0.06	3.20	3.20	3.20	3.20	0.21	0.21	0.21	0.21	0.00	0.00	0.00	0.00
Central African Republic	0.10	0.10	0.10	0.10	1.50	1.50	1.50	1.50	0.15	0.15	0.15	0.15	0.00	0.00	0.00	0.00
South Africa	0.02	0.04	0.04	0.04	1.30	1.84	1.50	1.50	0.03	0.07	0.06	0.06	0.00	0.00	-0.01	-14.29
Mozambique	0.38	0.38	0.38	0.38	0.34	0.34	0.34	0.34	0.13	0.13	0.13	0.13	0.00	0.00	0.00	0.00
Cote d'Ivoire	0.15	0.15	0.15	0.15	1.45	1.45	1.45	1.45	0.21	0.21	0.21	0.21	0.00	0.00	0.00	0.00
Benin	0.23	0.19	0.19	0.19	1.00	0.92	0.92	0.92	0.23	0.18	0.18	0.18	0.00	0.00	0.00	0.00
South Asia																
India	4.73	4.80	4.80	4.80	1.00	1.31	1.15	1.15	4.72	6.30	5.50	5.50	0.00	0.00	-0.80	-12.70
Pakistan	0.12	0.09	0.10	0.10	0.89	0.98	0.92	0.92	0.10	0.09	0.09	0.09	0.00	0.00	0.00	-1.10
Southeast Asia																
Indonesia	0.57	0.55	0.55	0.55	1.80	1.80	1.78	1.78	1.03	0.99	0.97	0.97	0.00	0.00	-0.02	-2.02
Burma	1.03	0.89	0.99	0.99	1.53	1.55	1.57	1.57	1.58	1.38	1.55	1.55	0.00	0.00	0.18	12.73
Vietnam	0.18	0.18	0.18	0.18	2.48	2.48	2.48	2.48	0.44	0.43	0.45	0.45	0.00	0.00	0.01	3.00
Thailand	0.02	0.02	0.02	0.02	1.67	1.67	1.67	1.67	0.04	0.04	0.04	0.04	0.00	0.00	0.00	0.00
South America																
Argentina	0.33	0.36	0.33	0.33	4.35	3.57	3.85	4.00	1.42	1.30	1.27	1.32	0.05	3.94	0.02	1.54
Brazil	0.15	0.16	0.16	0.16	2.96	3.47	3.38	3.38	0.44	0.55	0.54	0.54	0.00	0.00	-0.01	-0.92
Mexico	0.05	0.05	0.06	0.06	1.75	1.74	1.73	1.73	0.09	0.08	0.10	0.10	0.00	0.00	0.02	24.39
Others	1.84	1.80	1.80	1.80	1.16	1.12	1.15	1.15	2.15	2.01	2.07	2.07	0.00	0.00	0.06	3.09

Table 14 Sunflowerseed Area, Yield, and Production

Country / Region	Area (Million hectares)				Yield (Metric tons per hectare)				Production (Million metric tons)				Change in Production						
	2018/19	Prel.		2020/21 Proj.		2018/19	Prel.		2020/21 Proj.		2018/19	Prel.		2020/21 Proj.		From last month		From last year	
		2019/20	Jun	Jul	2019/20		Jun	Jul	2019/20	Jun		Jul	MMT	Percent	MMT	Percent			
World	25.80	26.37	27.10	27.08	1.96	2.09	2.09	2.10	50.59	55.04	56.78	56.79	0.01	0.01	1.74	3.16			
United States	0.49	0.50	0.60	0.60	1.94	1.75	1.84	1.84	0.96	0.88	1.11	1.10	-0.01	-0.99	0.21	24.26			
Total Foreign	25.31	25.87	26.50	26.48	1.96	2.09	2.10	2.10	49.64	54.16	55.67	55.69	0.02	0.03	1.53	2.82			
Former Soviet Union - 12																			
Russia	7.94	8.36	8.50	8.50	1.60	1.83	1.82	1.82	12.71	15.31	15.50	15.50	0.00	0.00	0.20	1.27			
Ukraine	6.50	6.40	6.60	6.60	2.31	2.58	2.58	2.58	15.00	16.50	17.00	17.00	0.00	0.00	0.50	3.03			
Kazakhstan	0.85	0.82	0.83	0.83	1.00	1.13	1.20	1.20	0.85	0.92	1.00	1.00	0.00	0.00	0.08	8.93			
European Union	4.02	4.29	4.20	4.20	2.37	2.24	2.29	2.29	9.51	9.61	9.60	9.60	0.00	0.00	-0.01	-0.10			
South America																			
Argentina	1.88	1.56	1.86	1.86	2.04	2.11	2.15	2.15	3.83	3.30	4.00	4.00	0.00	0.00	0.70	21.21			
Uruguay	0.06	0.06	0.07	0.07	1.61	1.67	1.69	1.69	0.09	0.10	0.11	0.11	0.00	0.00	0.01	10.00			
Bolivia	0.11	0.11	0.12	0.11	1.25	1.10	0.74	1.20	0.14	0.12	0.09	0.13	0.05	54.12	0.01	7.38			
Brazil	0.06	0.05	0.05	0.05	1.67	1.60	1.50	1.50	0.11	0.08	0.08	0.08	0.00	0.00	-0.01	-6.25			
Paraguay	0.03	0.03	0.03	0.03	1.58	1.70	1.70	1.70	0.05	0.05	0.05	0.05	0.00	0.00	0.00	0.00			
China	0.92	1.25	1.25	1.25	2.71	2.60	2.64	2.64	2.49	3.25	3.30	3.30	0.00	0.00	0.05	1.54			
South Asia																			
India	0.26	0.24	0.25	0.25	0.65	0.76	0.76	0.76	0.17	0.18	0.19	0.19	0.00	0.00	0.00	1.65			
Pakistan	0.12	0.14	0.15	0.15	1.20	1.04	1.07	1.07	0.14	0.15	0.16	0.16	0.00	0.00	0.02	10.34			
Middle East																			
Turkey	0.72	0.73	0.70	0.70	2.52	2.40	2.40	2.40	1.80	1.75	1.68	1.68	0.00	0.00	-0.07	-4.00			
Iran	0.04	0.04	0.04	0.04	1.08	1.08	1.08	1.08	0.04	0.04	0.04	0.04	0.00	0.00	0.00	0.00			
Israel	0.01	0.01	0.01	0.01	1.60	1.60	1.60	1.60	0.02	0.02	0.02	0.02	0.00	0.00	0.00	0.00			
Africa																			
Egypt	0.01	0.01	0.01	0.01	2.38	2.38	2.38	2.38	0.02	0.02	0.02	0.02	0.00	0.00	0.00	0.00			
Morocco	0.02	0.02	0.02	0.02	1.29	1.25	1.25	1.25	0.03	0.03	0.03	0.03	0.00	0.00	0.00	0.00			
South Africa	0.52	0.50	0.52	0.52	1.32	1.53	1.27	1.27	0.68	0.77	0.66	0.66	0.00	0.00	-0.11	-13.73			
Burma	0.60	0.60	0.60	0.60	0.65	0.65	0.65	0.65	0.39	0.39	0.39	0.39	0.00	0.00	0.00	0.00			
Canada	0.03	0.03	0.04	0.03	2.11	2.17	2.25	2.14	0.06	0.06	0.09	0.06	-0.03	-33.33	0.00	-4.76			
Australia	0.02	0.02	0.02	0.02	1.21	1.25	1.26	1.26	0.02	0.03	0.03	0.03	0.00	0.00	0.00	16.00			
Others	0.60	0.59	0.65	0.65	2.49	2.53	2.57	2.57	1.50	1.50	1.66	1.66	0.00	0.00	0.15	10.19			

World and Selected Countries and Regions

Table 15 Rapeseed Area, Yield, and Production

Country / Region	Area (Million hectares)				Yield (Metric tons per hectare)				Production (Million metric tons)				Change in Production			
	Prel.		2020/21 Proj.		Prel.		2020/21 Proj.		Prel.		2020/21 Proj.		From last month		From last year	
	2018/19	2019/20	Jun	Jul	2018/19	2019/20	Jun	Jul	2018/19	2019/20	Jun	Jul	MMT	Percent	MMT	Percent
World	36.81	34.75	35.57	35.14	1.97	1.96	1.99	1.99	72.61	68.20	70.79	69.82	-0.97	-1.37	1.62	2.38
United States	0.79	0.78	0.78	0.75	2.09	2.00	1.92	1.92	1.64	1.55	1.50	1.43	-0.07	-4.73	-0.12	-7.86
Total Foreign	36.02	33.97	34.79	34.39	1.97	1.96	1.99	1.99	70.96	66.65	69.29	68.39	-0.90	-1.30	1.74	2.62
European Union	7.00	5.55	5.45	5.45	2.87	3.03	3.08	3.08	20.06	16.83	16.80	16.80	0.00	0.00	-0.03	-0.18
Canada	9.12	8.30	8.70	8.30	2.23	2.29	2.29	2.29	20.34	19.00	19.90	19.00	-0.90	-4.52	0.00	0.00
China	6.55	6.60	6.65	6.65	2.03	1.98	1.98	1.98	13.28	13.10	13.20	13.20	0.00	0.00	0.10	0.76
South Asia																
India	7.20	7.40	7.20	7.20	1.11	1.04	1.06	1.06	8.00	7.70	7.65	7.65	0.00	0.00	-0.05	-0.65
Pakistan	0.26	0.40	0.45	0.45	1.04	1.03	1.02	1.02	0.27	0.41	0.46	0.46	0.00	0.00	0.05	12.20
Bangladesh	0.25	0.25	0.25	0.25	0.92	0.92	0.92	0.92	0.23	0.23	0.23	0.23	0.00	0.00	0.00	0.00
Former Soviet Union - 12																
Russia	1.50	1.42	1.40	1.40	1.33	1.44	1.50	1.50	1.99	2.04	2.10	2.10	0.00	0.00	0.06	2.94
Ukraine	1.00	1.34	1.35	1.35	2.85	2.59	2.96	2.96	2.85	3.47	4.00	4.00	0.00	0.00	0.54	15.44
Belarus	0.35	0.34	0.35	0.35	1.31	1.68	1.57	1.57	0.46	0.58	0.55	0.55	0.00	0.00	-0.03	-4.84
Kazakhstan	0.37	0.27	0.28	0.28	1.08	0.90	1.14	1.14	0.39	0.24	0.32	0.32	0.00	0.00	0.08	32.78
Australia	2.12	1.80	2.40	2.40	1.12	1.29	1.38	1.38	2.37	2.33	3.30	3.30	0.00	0.00	0.97	41.63
South America																
Chile	0.05	0.04	0.05	0.05	3.85	4.10	4.00	4.00	0.19	0.17	0.20	0.20	0.00	0.00	0.03	16.28
Paraguay	0.03	0.03	0.04	0.04	1.20	1.87	1.88	1.88	0.04	0.06	0.08	0.08	0.00	0.00	0.02	33.93
Switzerland	0.02	0.02	0.02	0.02	3.14	3.14	3.14	3.14	0.07	0.07	0.07	0.07	0.00	0.00	0.00	0.00
Ethiopia	0.04	0.04	0.04	0.04	1.57	1.86	1.86	1.86	0.06	0.07	0.07	0.07	0.00	0.00	0.00	0.00
Others	0.18	0.17	0.17	0.17	2.14	2.14	2.24	2.24	0.38	0.36	0.37	0.37	0.00	0.00	0.01	3.07

World and Selected Countries and Regions

Table 16 Copra, Palm Kernel, and Palm Oil Production

Country / Region	Production (Million metric tons)				Change in Production			
	2018/19	Prel.	2020/21 Proj.		From last month		From last year	
		2019/20	Jun	Jul	MMT	Percent	MMT	Percent
Oilseed, Copra								
Philippines	2.63	2.50	2.40	2.40	0.00	0.00	-0.10	-4.00
Indonesia	1.64	1.66	1.66	1.66	0.00	0.00	0.00	0.00
India	0.75	0.75	0.75	0.75	0.00	0.00	0.00	0.00
Vietnam	0.29	0.29	0.30	0.30	0.00	0.00	0.01	3.45
Mexico	0.22	0.22	0.22	0.22	0.00	0.00	0.00	0.00
Papua New Guinea	0.10	0.08	0.08	0.08	0.00	0.00	0.00	0.00
Thailand	0.07	0.07	0.07	0.07	0.00	0.00	0.00	0.00
Sri Lanka	0.07	0.07	0.07	0.07	0.00	0.00	0.00	0.00
Solomon Islands	0.03	0.03	0.03	0.03	0.00	0.00	0.00	0.00
Cote d'Ivoire	0.03	0.03	0.03	0.03	0.00	0.00	0.00	0.00
World	5.98	5.86	5.77	5.77	0.00	0.00	-0.09	-1.54
Oilseed, Palm Kernel								
Indonesia	10.90	11.25	11.46	11.46	0.00	0.00	0.21	1.87
Malaysia	5.15	4.60	4.80	4.80	0.00	0.00	0.20	4.35
Thailand	0.87	0.89	0.90	0.90	0.00	0.00	0.01	1.12
Nigeria	0.73	0.73	0.73	0.73	0.00	0.00	0.00	0.00
Ghana	0.77	0.65	0.65	0.65	0.00	0.00	0.00	0.00
Colombia	0.33	0.36	0.35	0.35	0.00	0.00	-0.01	-2.78
Guatemala	0.20	0.17	0.17	0.17	0.00	0.00	0.00	0.00
Papua New Guinea	0.18	0.16	0.16	0.16	0.00	0.00	0.00	0.00
Brazil	0.14	0.14	0.14	0.14	0.00	0.00	0.00	0.00
Honduras	0.14	0.14	0.14	0.14	0.00	0.00	0.00	0.00
World	20.17	19.85	20.28	20.28	0.00	0.00	0.43	2.17
Oil, Palm								
Indonesia	41.50	42.50	43.50	43.50	0.00	0.00	1.00	2.35
Malaysia	20.80	18.50	19.30	19.30	0.00	0.00	0.80	4.32
Thailand	3.00	2.80	3.10	3.10	0.00	0.00	0.30	10.71
Colombia	1.63	1.53	1.67	1.67	0.00	0.00	0.14	9.15
Nigeria	1.02	1.02	1.02	1.02	0.00	0.00	0.00	0.00
Guatemala	0.85	0.85	0.85	0.85	0.00	0.00	0.00	0.00
Honduras	0.58	0.58	0.58	0.58	0.00	0.00	0.00	0.00
Papua New Guinea	0.71	0.56	0.56	0.56	0.00	0.00	0.00	0.00
Ecuador	0.56	0.55	0.62	0.62	0.00	0.00	0.07	12.73
Brazil	0.53	0.54	0.54	0.54	0.00	0.00	0.00	0.00
World	74.02	72.27	74.60	74.60	0.00	0.00	2.33	3.22

World and Selected Countries and Regions

Table 17 Cotton Area, Yield, and Production

Country / Region	Area (Million hectares)				Yield (Kilograms per hectare)				Production (Million 480 lb. bales)				Change in Production			
	Prel.		2020/21 Proj.		Prel.		2020/21 Proj.		Prel.		2020/21 Proj.		From last month		From last year	
	2018/19	2019/20	Jun	Jul	2018/19	2019/20	Jun	Jul	2018/19	2019/20	Jun	Jul	MBales	Percent	MBales	Percent
World	33.36	35.00	33.45	32.98	774	765	773	768	118.65	122.96	118.74	116.25	-2.49	-2.10	-6.71	-5.46
United States	4.04	4.70	4.59	4.15	989	922	924	919	18.37	19.91	19.50	17.50	-2.00	-10.26	-2.41	-12.12
Total Foreign	29.31	30.30	28.85	28.83	745	740	749	746	100.29	103.05	99.24	98.75	-0.49	-0.49	-4.30	-4.17
South Asia																
India	12.60	13.30	12.50	12.50	446	499	496	496	25.80	30.50	28.50	28.50	0.00	0.00	-2.00	-6.56
Pakistan	2.30	2.45	2.20	2.40	719	551	623	590	7.60	6.20	6.30	6.50	0.20	3.17	0.30	4.84
China	3.50	3.45	3.30	3.30	1,726	1,720	1,748	1,748	27.75	27.25	26.50	26.50	0.00	0.00	-0.75	-2.75
South America																
Brazil	1.64	1.67	1.55	1.55	1,726	1,721	1,686	1,686	13.00	13.20	12.00	12.00	0.00	0.00	-1.20	-9.09
Argentina	0.34	0.46	0.45	0.43	728	670	653	666	1.12	1.40	1.35	1.30	-0.05	-3.70	-0.10	-7.14
Paraguay	0.01	0.01	0.01	0.01	416	416	416	416	0.02	0.02	0.02	0.02	0.00	0.00	0.00	0.00
Africa																
Burkina	0.63	0.58	0.58	0.58	294	379	360	360	0.85	1.00	0.95	0.95	0.00	0.00	-0.05	-5.00
Mali	0.73	0.74	0.74	0.74	381	400	400	400	1.27	1.35	1.35	1.35	0.00	0.00	0.00	0.00
Cote d'Ivoire	0.39	0.41	0.41	0.41	520	528	531	531	0.94	0.99	1.00	1.00	0.00	0.00	0.01	1.01
Benin	0.65	0.68	0.68	0.68	469	468	468	468	1.40	1.45	1.45	1.45	0.00	0.00	0.00	0.00
Egypt	0.14	0.10	0.07	0.07	757	664	720	720	0.49	0.31	0.22	0.22	0.00	0.00	-0.09	-29.51
Cameroon	0.25	0.25	0.25	0.25	523	562	557	557	0.60	0.65	0.64	0.64	0.00	0.00	-0.01	-0.78
Tanzania	0.42	0.60	0.58	0.45	194	216	206	181	0.38	0.60	0.55	0.38	-0.18	-31.82	-0.22	-36.97
Nigeria	0.27	0.27	0.27	0.27	190	190	190	190	0.24	0.24	0.24	0.24	0.00	0.00	0.00	0.00
Zimbabwe	0.20	0.20	0.21	0.21	218	207	207	207	0.20	0.19	0.20	0.20	0.00	0.00	0.01	5.26
Ethiopia	0.08	0.08	0.08	0.08	687	680	637	637	0.24	0.25	0.24	0.24	0.00	0.00	-0.01	-4.00
Former Soviet Union - 12																
Uzbekistan	1.10	1.01	0.98	0.98	648	754	726	726	3.28	3.50	3.25	3.25	0.00	0.00	-0.25	-7.14
Turkmenistan	0.55	0.55	0.60	0.60	364	368	367	367	0.91	0.92	1.01	1.01	0.00	0.00	0.09	9.78
Tajikistan	0.18	0.18	0.16	0.16	502	708	680	680	0.42	0.59	0.50	0.50	0.00	0.00	-0.09	-14.53
Kazakhstan	0.13	0.13	0.11	0.11	587	644	623	623	0.35	0.37	0.32	0.32	0.00	0.00	-0.06	-14.86
Middle East																
Turkey	0.52	0.57	0.45	0.40	1,570	1,318	1,597	1,633	3.75	3.45	3.30	3.00	-0.30	-9.09	-0.45	-13.04
Syria	0.03	0.03	0.03	0.03	1,219	1,219	1,219	1,219	0.14	0.14	0.14	0.14	0.00	0.00	0.00	0.00
Iran	0.08	0.08	0.08	0.08	748	748	748	748	0.28	0.28	0.28	0.28	0.00	0.00	0.00	0.00
Australia	0.38	0.06	0.18	0.18	1,261	2,268	2,056	2,056	2.20	0.63	1.70	1.70	0.00	0.00	1.08	172.00
Mexico	0.24	0.23	0.17	0.16	1,555	1,519	1,517	1,429	1.74	1.57	1.15	1.05	-0.10	-8.70	-0.52	-33.12
Burma	0.24	0.25	0.24	0.24	637	641	662	662	0.70	0.72	0.73	0.73	0.00	0.00	0.01	0.83
Others	1.73	2.01	2.01	1.99	585	576	583	580	4.65	5.31	5.37	5.30	-0.07	-1.21	-0.01	-0.11

World and Selected Countries and Regions

TABLE 18

The table below presents a record of the July projection and the final Estimate. Using world wheat production as an example, the "root mean square error" means that chances are 2 out of 3 that the current forecast will not be above or below the final estimate by more than 2.8 percent. Chances are 9 out of 10 (90% confidence level) that the difference will not exceed 4.7 percent. The average difference between the July projection and the final estimate is 14.1 million tons, ranging from 1 million to 34.6 million tons. The July projection has been below the estimate 23 times and above 16 times.

RELIABILITY OF PRODUCTION PROJECTIONS 1/

COMMODITY AND REGION	Root mean square error	90 percent confidence interval	Difference between forecast and final estimate				
			Average	Smallest	Largest	Years	
						Below final	Above final
	Percent		---Million metric tons---				
WHEAT							
World	2.8	4.7	14.1	1.0	34.6	23	16
U.S.	3.5	5.9	1.5	0.0	6.2	18	21
Foreign	3.0	5.1	13.8	0.3	34.7	24	15
COARSE GRAINS 2/							
World	2.9	4.9	22.9	1.3	68.4	21	18
U.S.	10.0	17.0	15.4	0.6	57.9	19	20
Foreign	2.6	4.4	14.9	1.1	53.0	21	18
RICE (Milled)							
World	2.4	4.0	6.9	0.4	24.0	24	15
U.S.	5.4	9.2	0.3	0.0	0.8	19	18
Foreign	2.4	4.1	6.9	0.5	24.3	24	15
SOYBEANS							
World	5.1	8.6	7.5	0.5	26.9	18	21
U.S.	7.1	12.0	3.8	0.2	11.7	20	19
Foreign	7.4	12.6	6.6	1.0	25.8	20	19
COTTON			---Million 480-lb. bales---				
World	5.7	9.7	3.9	0.0	14.9	23	16
U.S.	9.8	16.6	1.4	0.1	5.3	21	18
Foreign	5.8	9.9	3.1	0.0	12.1	21	17
UNITED STATES			-----Million bushels-----				
<i>CORN</i>	10.9	18.6	559	12	2,190	22	17
<i>SORGHUM</i>	17.9	30.4	67	3	213	22	17
<i>BARLEY</i>	7.7	13.1	20	0	87	13	25
<i>OATS</i>	12.8	21.7	20	0	144	6	32

1/ Marketing years 1981/82 through 2019/20 for grains, soybeans (U.S. only), and cotton. Final for grains, soybeans, and cotton is defined as the first November estimate following the marketing year for 1981/82 through 2018/19, and for 2019/20 the last month's estimate.

2/ Includes corn, sorghum, barley, oats, rye, millet, and mixed grain

July 2020

Global Market Analysis, FAS, USDA